



This is not a certified copy

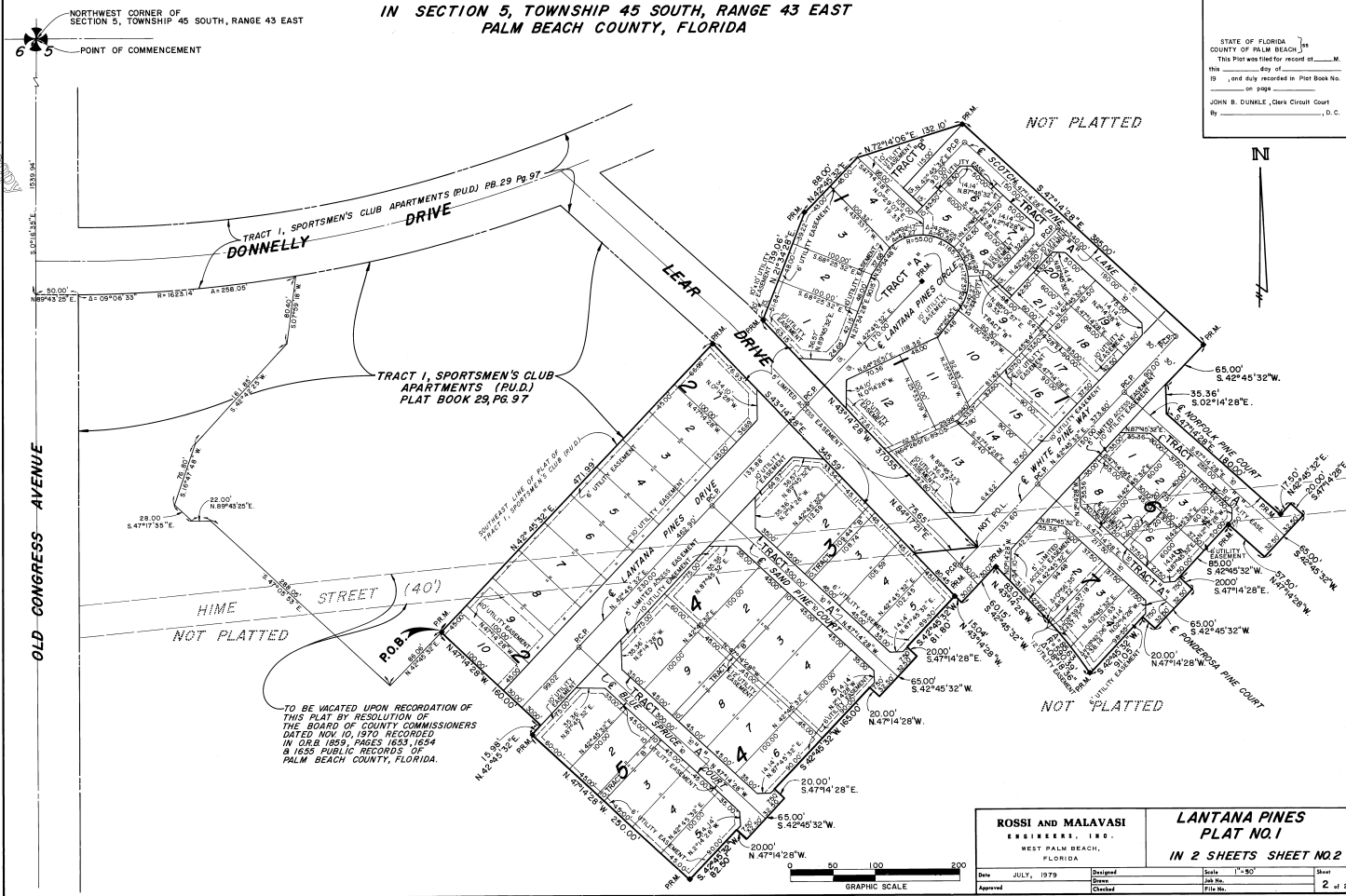
# LANTANA PINES - PLAT NO. 1

## SPORTSMEN'S CLUB - P.U.D.

IN SECTION 5, TOWNSHIP 45 SOUTH, RANGE 43 EAST  
PALM BEACH COUNTY, FLORIDA

45

STATE OF FLORIDA  
COUNTY OF PALM BEACH  
This Plat was filed for record of \_\_\_\_\_ M.  
on \_\_\_\_\_ day of \_\_\_\_\_  
in \_\_\_\_\_ and day recorded in Plat Book No. \_\_\_\_\_  
on page \_\_\_\_\_  
JOHN B. DUNKLE, Clerk Circuit Court  
By \_\_\_\_\_, D. C.



ROSSI AND MALAVASI ENGINEERS, I.R.O. WEST PALM BEACH, FLORIDA		LANTANA PINES PLAT NO. 1 IN 2 SHEETS SHEET NO. 2	
Date	JULY, 1979	Designed	Scale
Drawn		Checked	1"=50'
Approved		File No.	2 of 2