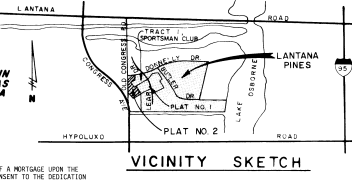


LANTANA PINES - PLAT NO. 2

SPORTSMAN'S CLUB - P.U.D. IN SECTION 5, TOWNSHIP 45 SOUTH, RANGE 43 EAST PALM BEACH COUNTY, FLORIDA

BEING A REPLAT OF A PORTION OF TRACT 1, SPORTSMAN CLUB APARTMENTS, P.U.D. AS RECORDED IN PLAT BOOK 29, PAGE 81, AND A REPLAT OF A PORTION OF BLOCKS 1 AND 2 OF LANAIN PARK AS RECORDED IN PLAT BOOK 21, PAGE 96, PUBLIC RECORDS OF PALM BEACH COUNTY, FLORIDA



STATE OF FLORIDA
COUNTY OF PALM BEACH
I, John B. Dunlap, Clerk of the Court,
do hereby certify that this is a true and correct copy of the original as recorded in my office on this 6th day of May, 1983, at 10:00 AM.
My commission expires on 11/15/83.
John B. Dunlap, Clerk of the Court
Palm Beach, Florida

P.L.A.T.	P.U.D. DENSITY TABULATION		AGGREGATE TOTALS		TOTAL ACRES
	AREA ACRES	NO. OF UNITS	AREA ACRES	NO. OF UNITS	
TRACT 1, SPORTSMAN CLUB APARTMENTS - P.U.D. NO. 29, PAGE 81	0.72	52	5.96		
LANTANA PINES PLAT NO. 2	9.10	63	6.92	115	6.45
LANTANA PINES PLAT NO. 2	6.43	23	3.57	245	158
					0.69

ACKNOWLEDGEMENT
STATE OF FLORIDA
COUNTY OF PALM BEACH
BEFORE ME PERSONALLY APPEARED Gene G. Gentry and Laura J. Daniels TO ME WELL KNOWN AND KNOWN TO ME TO BE THE INDIVIDUALS DESCRIBED IN AND WHO EXECUTED THE FOREGOING INSTRUMENT AS PRESIDENT AND SECRETARY OF THE ABOVE NAMED LANTANA DEVELOPERS, INC., A NEW YORK CORPORATION, AND THEY SEVERALLY ACKNOWLEDGED TO AND BEFORE ME THAT THEY EXECUTED SUCH INSTRUMENT AS SUCH PRESIDENT AND SECRETARY, RESPECTIVELY, OF SAID CORPORATION AND THAT THE SEAL AFFIXED TO THE FOREGOING INSTRUMENT IS THE CORPORATE SEAL OF SAID CORPORATION AND THAT IT WAS AFFIXED TO SAID INSTRUMENT BY DUE AND REGULAR CORPORATE AUTHORITY AND THAT SAID INSTRUMENT IS THE FREE ACT AND DEED OF SAID CORPORATION.

WITNESS MY HAND AND OFFICIAL SEAL, ON THIS 3rd DAY OF SEPTEMBER, A.D., 1982.

MY COMMISSION EXPIRES: FEB. 19, 1983

ACKNOWLEDGEMENT
STATE OF FLORIDA
COUNTY OF PALM BEACH
BEFORE ME PERSONALLY APPEARED Gene G. Gentry and Laura J. Daniels TO ME WELL KNOWN AND KNOWN TO ME TO BE THE INDIVIDUALS DESCRIBED IN AND WHO EXECUTED THE FOREGOING INSTRUMENT AS PRESIDENT AND SECRETARY OF THE ABOVE NAMED LANTANA DEVELOPERS, INC., A NEW YORK CORPORATION, AND THEY SEVERALLY ACKNOWLEDGED TO AND BEFORE ME THAT THEY EXECUTED SUCH INSTRUMENT AS SUCH PRESIDENT AND SECRETARY, RESPECTIVELY, OF SAID CORPORATION AND THAT THE SEAL AFFIXED TO THE FOREGOING INSTRUMENT IS THE CORPORATE SEAL OF SAID CORPORATION AND THAT IT WAS AFFIXED TO SAID INSTRUMENT BY DUE AND REGULAR CORPORATE AUTHORITY AND THAT SAID INSTRUMENT IS THE FREE ACT AND DEED OF SAID CORPORATION.

WITNESS MY HAND AND OFFICIAL SEAL, ON THIS 3rd DAY OF SEPTEMBER, A.D., 1982.

MY COMMISSION EXPIRES: FEB. 19, 1983

MORTGAGEE'S CONSENT
STATE OF FLORIDA
COUNTY OF PALM BEACH
THE UNDERSIGNED HEREBY CERTIFIES THAT IT IS THE HOLDER OF A MORTGAGE UPON THE PROPERTY DESCRIBED HEREIN AND DOES HEREBY JOIN IN AND CONSENT TO THE DEDICATION OF THE LAND DESCRIBED IN SAID DEDICATION BY THE OWNER THEREOF AND AGREES THAT ITS MORTGAGE WHICH IS RECORDED IN OFFICIAL RECORD BOOK 2794 AT PAGE 448 OF THE PUBLIC RECORDS OF PALM BEACH COUNTY, FLA., SHALL BE SUBORDINATED TO THE DEDICATION SHOWN HEREON.

IN WITNESS WHEREOF, THE SAID CORPORATION HAS CAUSED THESE PRESENTS TO BE SIGNED BY ITS President AND ATTESTED TO BY ITS Secretary OF THE BOARD OF DIRECTORS THIS 3rd DAY OF SEPTEMBER, 1982.

TITLE STATE BANK OF LANTANA
ATTEST: Frank R. Dunbar
ACKNOWLEDGEMENT
STATE OF FLORIDA
COUNTY OF PALM BEACH
BEFORE ME PERSONALLY APPEARED Gene G. Gentry and Laura J. Daniels TO ME WELL KNOWN AND KNOWN TO ME TO BE THE INDIVIDUALS DESCRIBED IN AND WHO EXECUTED THE FOREGOING INSTRUMENT AS PRESIDENT AND SECRETARY OF THE ABOVE NAMED LANTANA DEVELOPERS, INC., A NEW YORK CORPORATION, AND THEY SEVERALLY ACKNOWLEDGED TO AND BEFORE ME THAT THEY EXECUTED SUCH INSTRUMENT AS SUCH PRESIDENT AND SECRETARY, RESPECTIVELY, OF SAID CORPORATION AND THAT THE SEAL AFFIXED TO THE FOREGOING INSTRUMENT IS THE CORPORATE SEAL OF SAID CORPORATION AND THAT IT WAS AFFIXED TO SAID INSTRUMENT BY DUE AND REGULAR CORPORATE AUTHORITY AND THAT SAID INSTRUMENT IS THE FREE ACT AND DEED OF SAID CORPORATION.

WITNESS MY HAND AND OFFICIAL SEAL, ON THIS 3rd DAY OF SEPTEMBER, A.D., 1982.

MY COMMISSION EXPIRES: FEB. 19, 1983

MORTGAGEE'S CONSENT
STATE OF FLORIDA
COUNTY OF PALM BEACH
THE UNDERSIGNED HEREBY CERTIFIES THAT IT IS THE HOLDER OF A MORTGAGE UPON THE PROPERTY DESCRIBED HEREIN AND DOES HEREBY JOIN IN AND CONSENT TO THE DEDICATION OF THE LAND DESCRIBED IN SAID DEDICATION BY THE OWNER THEREOF AND AGREES THAT ITS MORTGAGE WHICH IS RECORDED IN OFFICIAL RECORD BOOK 2822, PAGE 474, OF THE PUBLIC RECORDS OF PALM BEACH COUNTY, FLA., SHALL BE SUBORDINATED TO THE DEDICATION SHOWN HEREON.

IN WITNESS WHEREOF, THE SAID CORPORATION HAS CAUSED THESE PRESENTS TO BE SIGNED BY ITS President AND ATTESTED TO BY ITS Secretary OF THE BOARD OF DIRECTORS THIS 3rd DAY OF SEPTEMBER, 1982.

TITLE STATE BANK OF LANTANA
ATTEST: Frank R. Dunbar
ACKNOWLEDGEMENT
STATE OF FLORIDA
COUNTY OF PALM BEACH
BEFORE ME PERSONALLY APPEARED Gene G. Gentry and Laura J. Daniels TO ME WELL KNOWN AND KNOWN TO ME TO BE THE INDIVIDUALS DESCRIBED IN AND WHO EXECUTED THE FOREGOING INSTRUMENT AS PRESIDENT AND SECRETARY OF THE ABOVE NAMED LANTANA DEVELOPERS, INC., A NEW YORK CORPORATION, AND THEY SEVERALLY ACKNOWLEDGED TO AND BEFORE ME THAT THEY EXECUTED SUCH INSTRUMENT AS SUCH PRESIDENT AND SECRETARY, RESPECTIVELY, OF SAID CORPORATION AND THAT THE SEAL AFFIXED TO THE FOREGOING INSTRUMENT IS THE CORPORATE SEAL OF SAID CORPORATION AND THAT IT WAS AFFIXED TO SAID INSTRUMENT BY DUE AND REGULAR CORPORATE AUTHORITY AND THAT SAID INSTRUMENT IS THE FREE ACT AND DEED OF SAID CORPORATION.

WITNESS MY HAND AND OFFICIAL SEAL, ON THIS 3rd DAY OF SEPTEMBER, A.D., 1982.

MY COMMISSION EXPIRES: FEB. 19, 1983

COUNTY APPROVALS
STATE OF FLORIDA
COUNTY OF PALM BEACH
THIS PLAT IS HEREBY APPROVED FOR RECORD THIS 5th DAY OF APRIL, A.D., 1983.

COUNTY ENGINEER:
JOHN B. DUNLAP, CLERK
ATTEST: John B. Dunlap
COUNTY ENGINEER

SURVEYOR'S NOTES
1. PERMANENT REFERENCE MONUMENTS ARE DESIGNATED THUSLY:

2. PERMANENT CONTROL POINTS ARE DESIGNATED THUSLY:

3. ALL BEARINGS GIVEN HEREIN ARE IN THE MERIDIAN OF THE FLORIDA STATE PLANE COORDINATE SYSTEM.

4. BUILDING SETBACK LINES SHALL BE AS REQUIRED BY ORDINANCES OF PALM BEACH COUNTY, FLORIDA.

5. NO BUILDINGS OR ANY KIND OF CONSTRUCTION SHALL BE PLACED ON UTILITY OR DRAINAGE EASEMENTS.

6. NO STRUCTURES, TREES OR SHRUBS SHALL BE PLACED ON DRAINAGE EASEMENTS.

7. APPROVAL OF LANDSCAPING ON UTILITY EASEMENTS OTHER THAN WATER OR SEWER SHALL BE ONLY WITH APPROVAL OF ALL UTILITIES OCCUPYING SAME.

8. IN INSTANCES WHERE DRAINAGE AND UTILITY EASEMENTS INTERSECT THE AREAS OF INTERSECTION ARE DRAINAGE AND UTILITY EASEMENTS. CONSTRUCTION, OPERATION AND MAINTENANCE OF UTILITIES IN THESE AREAS OF INTERSECTION SHALL NOT INTERFERE WITH THE CONSTRUCTION, OPERATION AND MAINTENANCE OF DRAINAGE FACILITIES LOCATED THEREIN.

9. WHERE THE DRAINAGE FOR PUBLIC ROADS TRAVERSES THIS DEVELOPMENT, THE COUNTY SHALL HAVE THE RIGHT, WITH WARRANTIES, TO OVERSEE THE DEVELOPMENT TO MAINTAIN SAID PUBLIC ROAD DRAINAGE SYSTEM BY METHODS DEEMED PROPER BY THE COUNTY.

HAS CAUSED THE SAME TO BE SURVEYED AND PLATTED AS SHOWN HEREON AND DOES HEREBY DEDICATE AS FOLLOWS:

- TRACT "A" AS SHOWN HEREON, IS HEREBY DEDICATED TO THE LANTANA PINES MASTER ASSOCIATION, INC., AND ITS SUCCESSORS AND ASSIGNS AS COMMON PROPERTY FOR ACCESS, ROADWAY, DRAINAGE AND UTILITY PURPOSES AND IS THE PERPETUAL MAINTENANCE OBLIGATION OF SAID ASSOCIATION WITHOUT RECOURSE TO PALM BEACH COUNTY.
- TRACT "B" AS SHOWN HEREON IS HEREBY DEDICATED TO THE LANTANA PINES MASTER ASSOCIATION, INC., AND ITS SUCCESSORS AND ASSIGNS AS COMMON PROPERTY FOR RECREATIONAL AND LANDSCAPE PURPOSES AND IS THE PERPETUAL MAINTENANCE OBLIGATION OF SAID ASSOCIATION WITHOUT RECOURSE TO PALM BEACH COUNTY.
- TRACT "C" CANALS AS SHOWN HEREON IS HEREBY DEDICATED TO THE LANTANA PINES MASTER ASSOCIATION, INC., AND ITS SUCCESSORS AND ASSIGNS, AS COMMON PROPERTY, FOR DRAINAGE PURPOSES AND IS THE PERPETUAL MAINTENANCE OBLIGATION OF SAID ASSOCIATION WITHOUT RECOURSE TO PALM BEACH COUNTY.
- THE UTILITY EASEMENTS AS SHOWN HEREON, ARE HEREBY DEDICATED IN PERPETUITY FOR THE CONSTRUCTION, OPERATION AND MAINTENANCE OF UTILITIES SUBJECT TO ORDINANCES OF RECORD.
- THE DRAINAGE EASEMENTS AS SHOWN HEREON, ARE HEREBY DEDICATED IN PERPETUITY FOR THE CONSTRUCTION, OPERATION AND MAINTENANCE OF DRAINAGE FACILITIES.
- TRACT "D" AS SHOWN HEREON IS HEREBY DEDICATED TO THE LANTANA PINES HOMEOWNERS ASSOCIATION, INC., AND ITS SUCCESSORS AND ASSIGNS FOR ACCESS, ROADWAY, DRAINAGE AND UTILITY PURPOSES AND IS THE PERPETUAL MAINTENANCE OBLIGATION OF SAID ASSOCIATION WITHOUT RECOURSE TO PALM BEACH COUNTY.
- TRACT "E" AS SHOWN HEREON, IS HEREBY DEDICATED TO THE LANTANA PINES MASTER ASSOCIATION, INC., ITS SUCCESSORS AND ASSIGNS, AS COMMON PROPERTY, FOR LANDSCAPE PURPOSES AND IS THE PERPETUAL MAINTENANCE OBLIGATION OF SAID ASSOCIATION WITHOUT RECOURSE TO PALM BEACH COUNTY.

IN WITNESS WHEREOF, THE SAID CORPORATION HAS CAUSED THESE PRESENTS TO BE SIGNED BY ITS SECRETARY AND ATTESTED TO BY ITS PRESIDENT AND ITS CORPORATE SEAL TO BE AFFIXED HERETO BY AND WITH THE AUTHORITY OF ITS BOARD OF DIRECTORS THIS 3rd DAY OF SEPTEMBER, A.D., 1982.

LANTANA PINES, LTD., A FLORIDA LIMITED PARTNERSHIP
LANTANA DEVELOPERS, INC.
Gene G. Gentry, President
Laura J. Daniels, Secretary
Diane Estabrook, Inc.
Gene G. Gentry, President
Laura J. Daniels, Secretary

ACKNOWLEDGEMENT
STATE OF FLORIDA
COUNTY OF PALM BEACH
BEFORE ME PERSONALLY APPEARED Gene G. Gentry and Laura J. Daniels TO ME WELL KNOWN AND KNOWN TO ME TO BE THE INDIVIDUALS DESCRIBED IN AND WHO EXECUTED THE FOREGOING INSTRUMENT AS PRESIDENT AND SECRETARY OF THE ABOVE NAMED LANTANA DEVELOPERS, INC., A NEW YORK CORPORATION, AND THEY SEVERALLY ACKNOWLEDGED TO AND BEFORE ME THAT THEY EXECUTED SUCH INSTRUMENT AS SUCH PRESIDENT AND SECRETARY, RESPECTIVELY, OF SAID CORPORATION AND THAT THE SEAL AFFIXED TO THE FOREGOING INSTRUMENT IS THE CORPORATE SEAL OF SAID CORPORATION AND THAT IT WAS AFFIXED TO SAID INSTRUMENT BY DUE AND REGULAR CORPORATE AUTHORITY AND THAT SAID INSTRUMENT IS THE FREE ACT AND DEED OF SAID CORPORATION.

WITNESS MY HAND AND OFFICIAL SEAL, ON THIS 3rd DAY OF SEPTEMBER, A.D., 1982.

MY COMMISSION EXPIRES: FEB. 19, 1983

TITLE CERTIFICATION
STATE OF FLORIDA
COUNTY OF PALM BEACH
I, GEORGE P. ORG, A B.L.Y. LICENSED ATTORNEY IN THE STATE OF FLORIDA, DO HEREBY CERTIFY THAT I HAVE EXAMINED THE TITLE TO THE HEREIN DESCRIBED PROPERTY, THAT I FIND THE TITLE TO THE PROPERTY TO BE VESTED TO LANTANA PINES, LTD., AND THAT THE PROPERTY IS FREE OF MORTGAGES, EXCEPT AS NOTED HEREON, AND THAT ALL MORTGAGEES ARE SHOWN HEREON.

DATE: September 6, 1982

SURVEYOR'S CERTIFICATION
STATE OF FLORIDA
COUNTY OF PALM BEACH
I HEREBY CERTIFY THAT THE PLAT SHOWN HEREON IS A TRUE AND CORRECT REPRESENTATION OF A SURVEY MADE UNDER MY PERSONAL DIRECTION AND SUPERVISION, AND THAT SAID SURVEY IS ACCURATE TO THE BEST OF MY KNOWLEDGE AND BELIEF AND THAT (P.S.M.S.) PERMANENT REFERENCE MONUMENTS HAVE BEEN SET AND THAT (P.S.M.S.) PERMANENT CONTROL POINTS WILL BE SET UNLESS THE GUARANTEES POSTED WITH THIS PLAT COMPLY WITH THE REQUIREMENTS OF CHAPTER 177, FLORIDA STATUTES, AS AMENDED, AND ORDINANCES OF PALM BEACH COUNTY, FLORIDA.

DATE: Dec 3rd 1982
Joseph M. Tucker
Florida Certificate No. 3285

THIS INSTRUMENT WAS PREPARED BY JOSEPH M. TUCKER IN THE OFFICES OF ROSSI & MALAVASI ENGINEERS, INC., 1875 PALM BEACH LAKES BOULEVARD, WEST PALM BEACH, FLORIDA 33411 TELEPHONE 73-6564.

ROSSI AND MALAVASI ENGINEERS, INC.		LANTANA PINES PLAT NO. 2	
WEST PALM BEACH, FLORIDA		IN 2 SHEETS SHEET NO. 1	
Date: JANUARY, 1983	Designed: R. ANDERSON	Scale: 1" = 50'	Sheet: 1 of 2
Approved: _____	Checked: T. CURRELO	Job No.: 3181-BD	

This is not a certified copy

This is not a certified copy

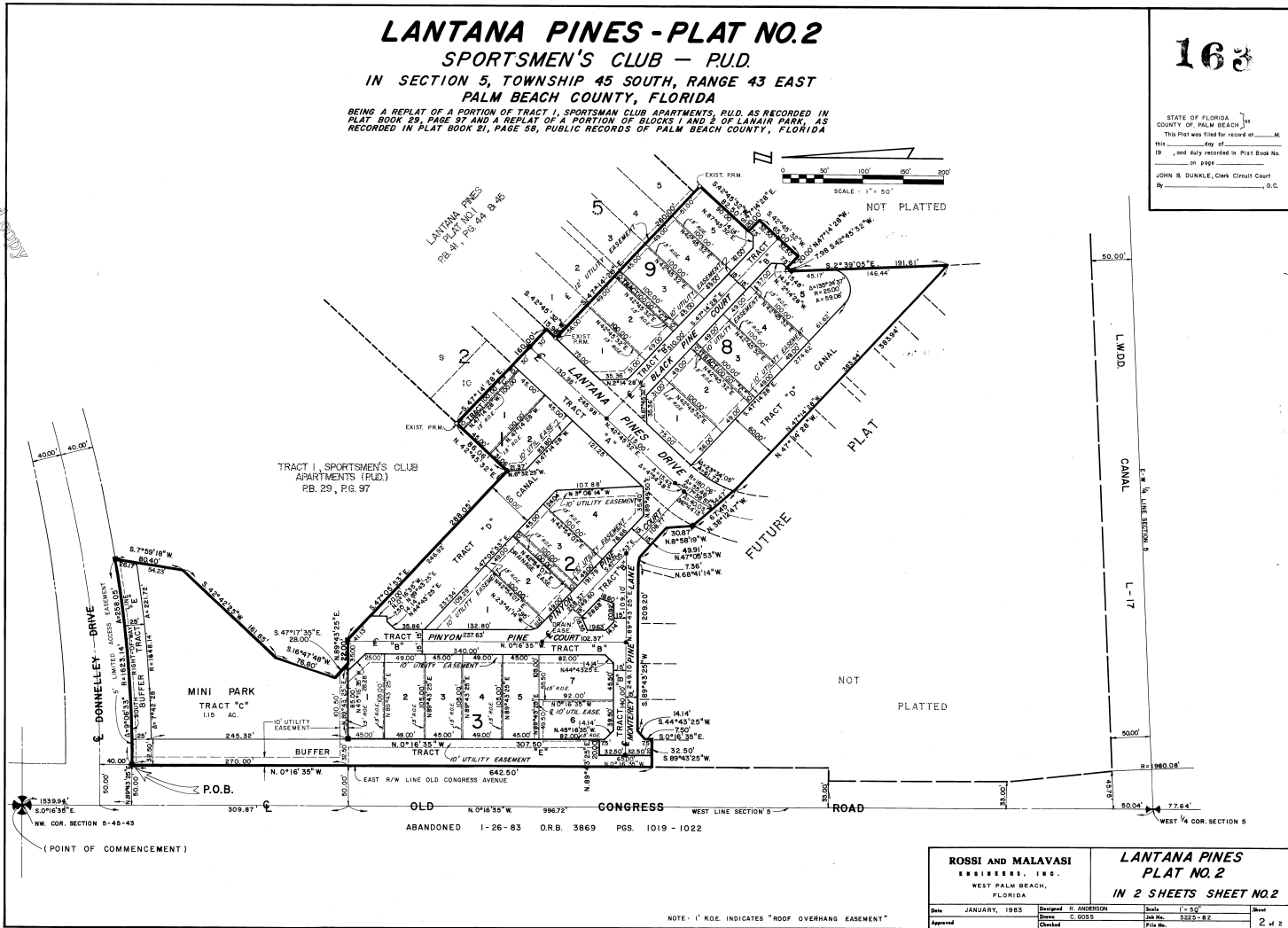
LANTANA PINES - PLAT NO. 2

SPORTSMEN'S CLUB - P.U.D.
 IN SECTION 5, TOWNSHIP 45 SOUTH, RANGE 43 EAST
 PALM BEACH COUNTY, FLORIDA

BEING A REPLAT OF A PORTION OF TRACT 1, SPORTSMAN CLUB APARTMENTS, P.U.D. AS RECORDED IN PLAT BOOK 29, PAGE 97 AND A REPLAT OF A PORTION OF BLOCKS 1 AND 2 OF LANTANA PARK, AS RECORDED IN PLAT BOOK 21, PAGE 58, PUBLIC RECORDS OF PALM BEACH COUNTY, FLORIDA

163

STATE OF FLORIDA
 COUNTY OF PALM BEACH
 This Plat was filed for record at _____ M.
 this _____ day of _____
 19____, and duly recorded in Plat Book No. _____
 on page _____
 JOHN B. DUNKLE, Clerk Circuit Court
 By _____, D.C.



ROSSI AND MALAVASI ENGINEERS, INC. WEST PALM BEACH, FLORIDA		LANTANA PINES PLAT NO. 2 IN 2 SHEETS SHEET NO. 2	
Date	JANUARY, 1983	Designed	D. ANDERSON
Drawn	G. GROSS	Checked	
Scale	1" = 50'	Job No.	3323-83
Sheet		File No.	
		2 of 2	

NOTE: 1" ROE INDICATES "ROOF OVERHANG EASEMENT"