

AMENDMENT TO DECLARATIONS OF CONDOMINIUM
OF CONDOMINIUMS 1 THROUGH AND INCLUDING 6
OF
WHITEHALL CONDOMINIUMS OF THE VILLAGES OF PALM BEACH LAKES

BURG & DIVOSTA CORPORATION, a Florida corporation, and WHITEHALL CONDOMINIUMS OF THE VILLAGES OF PALM BEACH LAKES ASSOCIATION, INC., a Florida corporation not-for-profit, pursuant to the authority described in Article XXIV, Paragraph E and F, of the Declaration of Condominiums for Condominiums 1 through and including 6 of Whitehall Condominiums of the Villages of Palm Beach Lakes, hereby amend said Declarations of Condominium.

1. Page 1 of Exhibit B of said Declarations of Condominium is amended by the recording of the attached surveyor's certificate indicating the parking spaces assigned to each apartment of each condominium.

2. All other terms, conditions, restrictions, provisions and other matters set forth in said Declaration of Condominium not in conflict with the attached certificate are hereby affirmed and ratified.

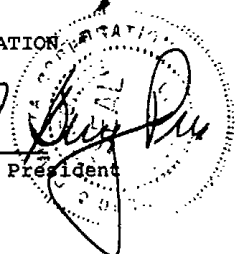
IN WITNESS WHEREOF, the parties hereto set their hands and seals this 18th day of January, 1985.

85 033982

1985 FEB 14 PM 12:14

Kathleen D. Wheeler
Melba N. Doubledice

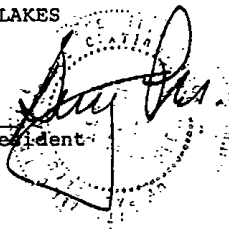
BURG & DIVOSTA CORPORATION
BY Clifford F. Burg
Clifford F. Burg, President



29.60
M.C.

Kathleen D. Wheeler
Melba N. Doubledice

WHITEHALL CONDOMINIUMS OF THE
VILLAGES OF PALM BEACH LAKES
ASSOCIATION, INC.
BY Clifford F. Burg
Clifford F. Burg, President



40
↑

STATE OF FLORIDA
COUNTY OF PALM BEACH

Subscribed and sworn to before me by Clifford F. Burg, President of BURG & DIVOSTA CORPORATION, this 18th day of January, 1985.

Kathleen D. Wheeler
Notary Public

My Commission Expires:
NOTARY PUBLIC STATE OF FLORIDA
MY COMMISSION EXPIRES JUNE 13 1987
BONDED THRU GENERAL INSURANCE UND



STATE OF FLORIDA
COUNTY OF PALM BEACH

Subscribed and sworn to before me by Clifford F. Burg, President of WHITEHALL CONDOMINIUMS OF THE VILLAGES OF PALM BEACH LAKES ASSOCIATION, INC., this 18th day of January, 1985

Kathleen D. Wheeler
Notary Public

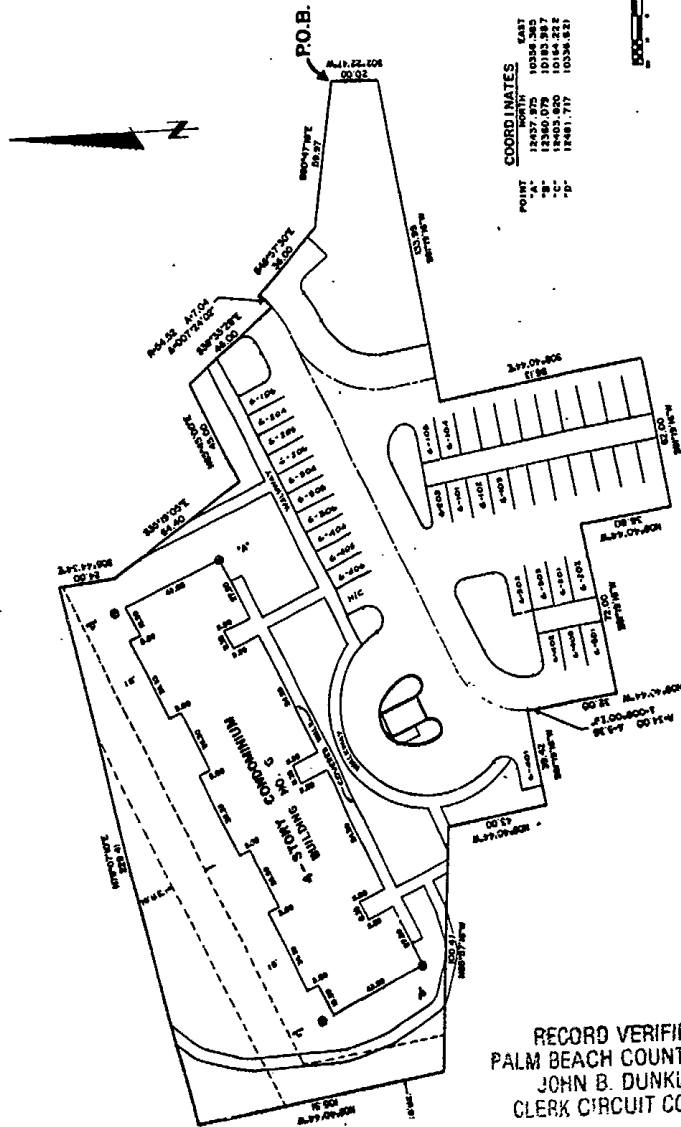
My Commission Expires:
NOTARY PUBLIC STATE OF FLORIDA
MY COMMISSION EXPIRES JUNE 13 1987
BONDED THRU GENERAL INSURANCE UND



B4467 P1633

84467 P1639

CONDOMINIUM 6 OF WHITEHALL CONDOMINIUMS
OF
THE VILLAGES OF PALM BEACH LAKES
EXHIBIT B
TO THE DECLARATION OF CONDOMINIUM



NOTES:
 1. "X" DIMENSIONS SHOWN WITH COORDINATED POINT VALUES.
 2. "Y" DIMENSIONS SHOWN WITH UNCOORDINATED POINT VALUES.
 3. DIMENSIONS SHOWN ARE 0' 0" UNLESS OTHERWISE NOTED.
 4. "H.C." - HORIZONTAL DIMENSIONS. ALL DIMENSIONS SHOWN ARE IN FEET.

LAMBERT, DELICATE & JENSEN

THIS CERTIFICATE AND THE 102' x 102' PLAN
 HEREON ARE THE PROPERTY OF LAMBERT, DELICATE & JENSEN
 ENGINEERS, ARCHITECTS AND SURVEYORS, 1000
 PALM BEACH BLVD., SUITE 200, PALM BEACH, FLORIDA 33480-0779.
 ANY REPRODUCTION OR TRANSMISSION OF THIS CERTIFICATE
 OR PLAN WITHOUT THE WRITTEN PERMISSION OF LAMBERT, DELICATE &
 JENSEN IS PROHIBITED. ANY SUCH REPRODUCTION OR TRANSMISSION
 SHALL BE AT THE REPRODUCER'S RISK AND WITHOUT LIABILITY TO
 LAMBERT, DELICATE & JENSEN. THIS CERTIFICATE AND PLAN ARE
 LIMITED TO THE CONDOMINIUM UNIT SHOWN AND SHALL NOT BE USED
 FOR ANY OTHER PURPOSE. ANY SUCH USE SHALL BE AT THE USER'S
 RISK AND WITHOUT LIABILITY TO LAMBERT, DELICATE & JENSEN.

Professional Seal of Surveyor/Engineer/Architect

COORDINATES

POINT	NORTH	EAST
"A"	12840.079	10183.387
"B"	12840.079	10164.232
"C"	12843.820	10164.232
"D"	12841.717	10336.631



Project No.	84-058
Client	AS BROWN
Date	MARCH, 1984
Scale	
Sheet No.	
Total Sheets	
Drawn by	
Checked by	
Project Name	CONDOMINIUM 6 OF WHITEHALL CONDOMINIUMS
Location	THE VILLAGES OF PALM BEACH LAKES
City/State	PALM BEACH, FLORIDA
Surveyor/Engineer/Architect	LAMBERT, DELICATE & JENSEN
Professional Seal No.	1000

RECORD VERIFIED
 PALM BEACH COUNTY FLA
 JOHN B. DUNKLE
 CLERK CIRCUIT COURT