

Will call #74

AMENDMENT TO
DECLARATION OF CONDOMINIUM
OF
GLENEAGLES CONDOMINIUM III

WHEREAS, RAINBERRY DEVELOPERS ONE COMPANY, LTD., its successors and assigns (hereinafter referred to as the "Developer"), submitted the real property described in Exhibit A hereto to the condominium form of ownership pursuant to Chapter 718, Florida Statutes (the "Condominium Act"), by the Declaration of Condominium of Gleneagles Condominium III recorded in Official Records Book 4879, Page 1656 of the Public Records of Palm Beach County, Florida (the "Declaration"); and

WHEREAS, RAINBERRY DEVELOPERS ONE COMPANY, LTD. is defined in the Declaration as the "Developer"; and

WHEREAS, pursuant to provisions of Article XXV.B of the Declaration, Developer reserved the right to amend the Declaration by its act alone, to attach surveyor's certificates for certifying the completion of each Building in Gleneagles Condominium III as set forth in Section 718.104(e) of the Condominium Act.

NOW, THEREFORE, Developer amends the Declaration to attach the surveyor's certification, the survey and floor plans for Buildings 20, 21, 22 and 23 attached hereto as Exhibit B.

Witnesses:

DEVELOPER:
RAINBERRY DEVELOPERS ONE
COMPANY, LTD., a Florida
limited partnership

By: RAINBERRY DEVELOPERS ONE,
INC., a Florida corporation as general
partner

Subot Edelman

By: [Signature]

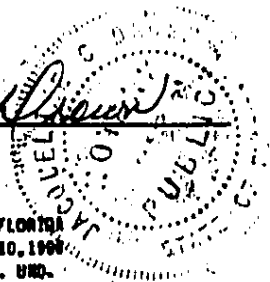
Jacqueline C. Brown

STATE OF FLORIDA
COUNTY OF PALM BEACH

I HEREBY CERTIFY that on this day personally appeared before me, an officer duly authorized and acting, Roy Flack, President, respectively, of RAINBERRY DEVELOPERS ONE, INC., to me known to be the persons who signed the foregoing instrument as such officers, and they acknowledged the execution thereof to be their free act and deed as such officers for the uses and purposes therein mentioned, and that the instrument is the act and deed of said corporation on behalf of Rainberry Developers One Company, Ltd., of which it is a general partner.

WITNESS my hand and official seal in the County and State last aforesaid this 26 day of March, 1987.

Jacqueline C. Brown
Notary Public
My commission expires:



Prepared By: Return to:
Marian Pearlman Nease, Esq.
5150 Linton Boulevard
Delray Beach, FL 33445

NOTARY PUBLIC STATE OF FLORIDA
MY COMMISSION EXPIRES AUG 10, 1990
BONDED THRU GENERAL INS. UND.

1987 APR 21 PM 4:15
BIT 117254

85251 P1107

EXHIBIT "A"
TO THE DECLARATION OF CONDOMINIUM OF
GLENEAGLES CONDOMINIUM III

LEGAL DESCRIPTION:

A PARCEL OF LAND SITUATE IN SECTION 21, TOWNSHIP 46 SOUTH, RANGE 42 EAST, PALM BEACH COUNTY, FLORIDA.

BEING ALL OF TRACTS C-1, C-2, THE ACCESS TRACT, AND ALL RIGHTS-OF-WAY OF "GLENEAGLES PLAT SEVEN", AS RECORDED IN PLAT BOOK 52 ON PAGES 61 THROUGH 64 OF THE PUBLIC RECORDS OF SAID PALM BEACH COUNTY.

TOGETHER WITH:

TRACTS C-3 THROUGH C-4 INCLUSIVE, TRACTS A-1 THROUGH A-7 INCLUSIVE AND ALL RIGHTS-OF-WAY OF THE PROPOSED PLAT OF "GLENEAGLES PLAT SEVEN A", AS RECORDED IN PLAT BOOK 53 ON PAGES 87 THROUGH 88 OF THE PUBLIC RECORDS OF SAID PALM BEACH COUNTY.

THE ABOVE DESCRIBED PARCELS CONTAIN 23.181 ACRES (TOTAL), MORE OR LESS.

EXHIBIT "B"
TO THE DECLARATION OF CONDOMINIUM OF
GLENEAGLES CONDOMINIUM III

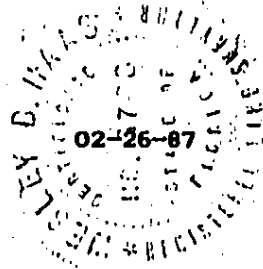
CERTIFICATION

I, WESLEY B. HAAS, A LAND SURVEYOR DULY AUTHORIZED TO PRACTICE UNDER THE LAWS OF THE STATE OF FLORIDA, HEREBY CERTIFY THAT THE CONSTRUCTION OF THE IMPROVEMENTS CONSTITUTING BUILDING NO. 20 OF GLENEAGLES CONDOMINIUM III, A CONDOMINIUM, IS SUBSTANTIALLY COMPLETE SO THAT THE ATTACHED SURVEY, PLOT PLAN, AND GRAPHIC DESCRIPTION OF IMPROVEMENTS, TOGETHER WITH THE DECLARATION DESCRIBING THE CONDOMINIUM PROPERTY PRESENT AN ACCURATE REPRESENTATION OF THE LOCATION AND DIMENSIONS OF THE IMPROVEMENTS, AND THAT THE IDENTIFICATION, LOCATION, AND DIMENSIONS OF THE COMMON ELEMENTS AND OF EACH UNIT CAN BE DETERMINED FROM THESE MATERIALS AND COMMON ELEMENT FACILITIES SERVING BUILDING NO. 20 HAVE BEEN SUBSTANTIALLY COMPLETED, ALL IN ACCORDANCE WITH CHAPTER 718, SECTION 104, PARAGRAPH (4)e OF THE FLORIDA STATUTES.

GENERAL NOTATIONS:

1. ELEVATIONS SHOWN HEREON REFER TO N.O.S. DATUM AND ARE EXPRESSED IN FEET.
2. THE PROPOSED DIMENSIONS OF ALL BUILDINGS WERE COMPILED FROM PLANS AND DATA PREPARED BY SHEPHERD, LEGAN, ALDRIAN, LTD.
3. THE PROPOSED FINISHED FLOOR ELEVATION OF THE FIRST FLOOR OF EACH BUILDING WAS PROVIDED BY WANTMAN & ASSOCIATES, INC., CONSULTING ENGINEERS.
4. DIMENSIONS AND ELEVATIONS AS SHOWN HEREON ARE SUBJECT TO NORMAL CONSTRUCTION TOLERANCES.

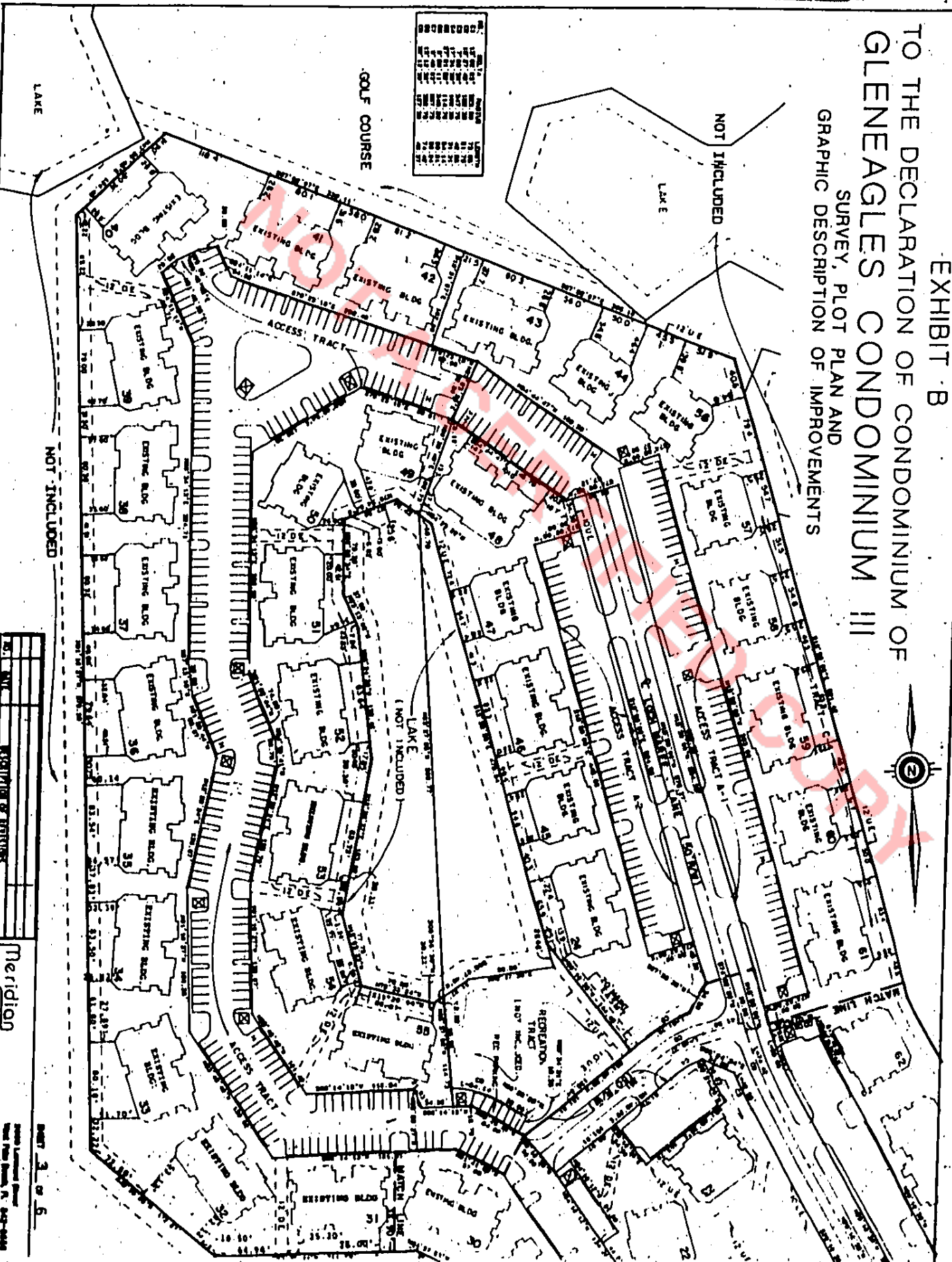

WESLEY B. HAAS
PROFESSIONAL LAND SURVEYOR
FLORIDA CERTIFICATE NO. 3708



B5251 P1109

RECORDER'S MEMO: Legibility of Writing, Typing or Printing unsatisfactory in this document when received.

EXHIBIT B
 TO THE DECLARATION OF CONDOMINIUM OF
GLENEAGLES CONDOMINIUM III
 SURVEY, PLOT PLAN AND
 GRAPHIC DESCRIPTION OF IMPROVEMENTS



NO.	DATE	REVISIONS

Meridion
 Surveying and mapping Inc.
 2000 Lakeside Drive
 West Palm Beach, FL 33411-4444
 Phone: 561-833-1111
 Fax: 561-833-1112
 E-mail: info@meridion.com

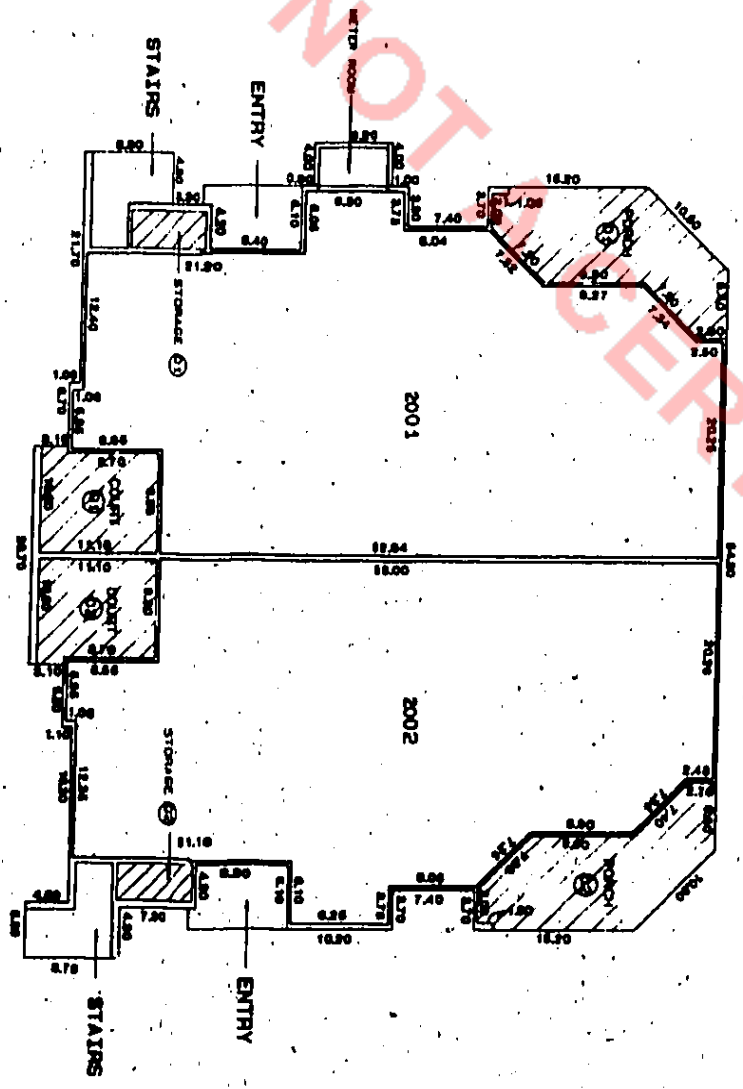
85251 P111
 T11D T525B

EXHIBIT B
 TO THE DECLARATION OF CONDOMINIUM OF
 GLENEAGLES CONDOMINIUM III
 SURVEY, PLOT PLAN AND GRAPHIC DESCRIPTION OF IMPROVEMENTS

FIRST FLOOR PLAN
 BUILDING NO. 20

UNFINISHED FIRST FLOOR ELEVATOR: 22M
 UNFINISHED FIRST FLOOR CEILING ELEVATOR: 24M

NOTE: REFER TO SURVEY NOTES ATTACHED HERETO FOR FURTHER INFORMATION.



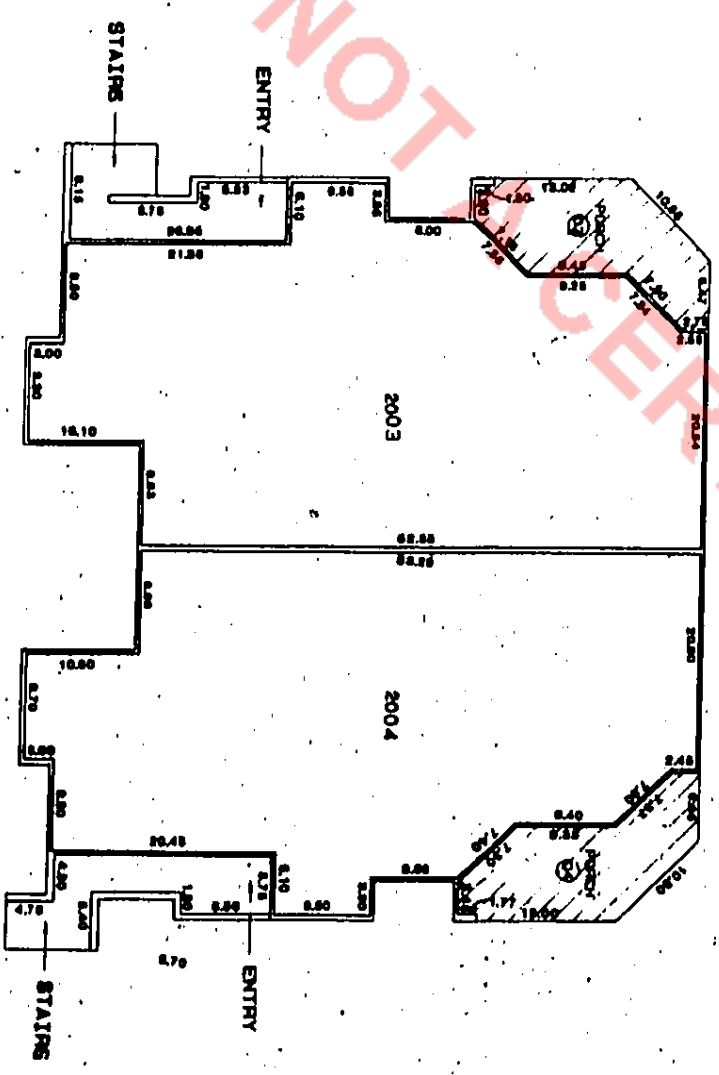
LEGEND
 [Symbol] DENOTES UNIT BOUNDARY.
 [Symbol] DENOTES LIMITED COMMON ELEMENT.
 [Symbol] DENOTES UNIT NUMBER TO WHICH LIMITED COMMON ELEMENT IS APPURTENANT.



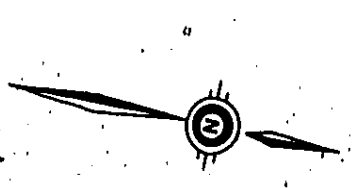
EXHIBIT B
TO THE DECLARATION OF CONDOMINIUM OF
GLENEAGLES CONDOMINIUM III
SURVEY, PLOT PLAN AND GRAPHIC DESCRIPTION OF IMPROVEMENTS

UNFINISHED SECOND FLOOR ELEVATION: 90.7'
UNFINISHED SECOND FLOOR CEILING ELEVATION: 90.64'
SECOND FLOOR PLAN
BUILDING NO. 20

NOTE: REFER TO SURVEY NOTES ATTACHED HERETO FOR FURTHER INFORMATION.



LEGEND
DENOTES UNIT BOUNDARY.
DENOTES LIMITED COMMON ELEMENT.
DENOTES UNIT NUMBER TO WHICH LIMITED COMMON ELEMENT IS APPURTENANT.



NO.	DATE	DESCRIPTION
1	07/15/2003	PRELIMINARY
2	08/15/2003	REVISED PER COMMENTS
3	09/15/2003	FINAL

Meridian
Surveying and Mapping Inc.
1000 Lakeside Drive
Fort Worth, TX 76104-2000
817-335-0000
www.meridiansurveying.com

EXHIBIT "B"
TO THE DECLARATION OF CONDOMINIUM OF
GLENEAGLES CONDOMINIUM III

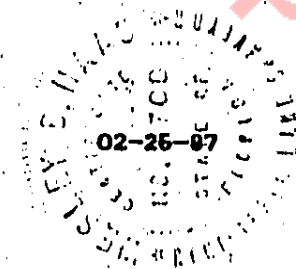
CERTIFICATION

I, WESLEY B. HAAS, A LAND SURVEYOR DULY AUTHORIZED TO PRACTICE UNDER THE LAWS OF THE STATE OF FLORIDA, HEREBY CERTIFY THAT THE CONSTRUCTION OF THE IMPROVEMENTS CONSTITUTING BUILDING NO. 21 OF GLENEAGLES CONDOMINIUM III, A CONDOMINIUM, IS SUBSTANTIALLY COMPLETE SO THAT THE ATTACHED SURVEY, PLOT PLAN, AND GRAPHIC DESCRIPTION OF IMPROVEMENTS, TOGETHER WITH THE DECLARATION DESCRIBING THE CONDOMINIUM PROPERTY PRESENT AN ACCURATE REPRESENTATION OF THE LOCATION AND DIMENSIONS OF THE IMPROVEMENTS, AND THAT THE IDENTIFICATION, LOCATION, AND DIMENSIONS OF THE COMMON ELEMENTS AND OF EACH UNIT CAN BE DETERMINED FROM THESE MATERIALS AND COMMON ELEMENT FACILITIES SERVING BUILDING NO. 21 HAVE BEEN SUBSTANTIALLY COMPLETED, ALL IN ACCORDANCE WITH CHAPTER 718, SECTION 104, PARAGRAPH (4)e OF THE FLORIDA STATUTES.

GENERAL NOTATIONS:

1. ELEVATIONS SHOWN HEREON REFER TO N.O.S. DATUM AND ARE EXPRESSED IN FEET.
2. THE PROPOSED DIMENSIONS OF ALL BUILDINGS WERE COMPILED FROM PLANS AND DATA PREPARED BY SHEPHERD, LEGAN, ALDRIN, LTD.
3. THE PROPOSED FINISHED FLOOR ELEVATION OF THE FIRST FLOOR OF EACH BUILDING WAS PROVIDED BY WANTMAN & ASSOCIATES, INC., CONSULTING ENGINEERS.
4. DIMENSIONS AND ELEVATIONS AS SHOWN HEREON ARE SUBJECT TO NORMAL CONSTRUCTION TOLERANCES.


WESLEY B. HAAS
PROFESSIONAL LAND SURVEYOR
FLORIDA CERTIFICATE NO. 3708



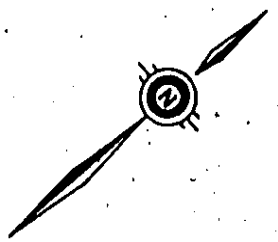
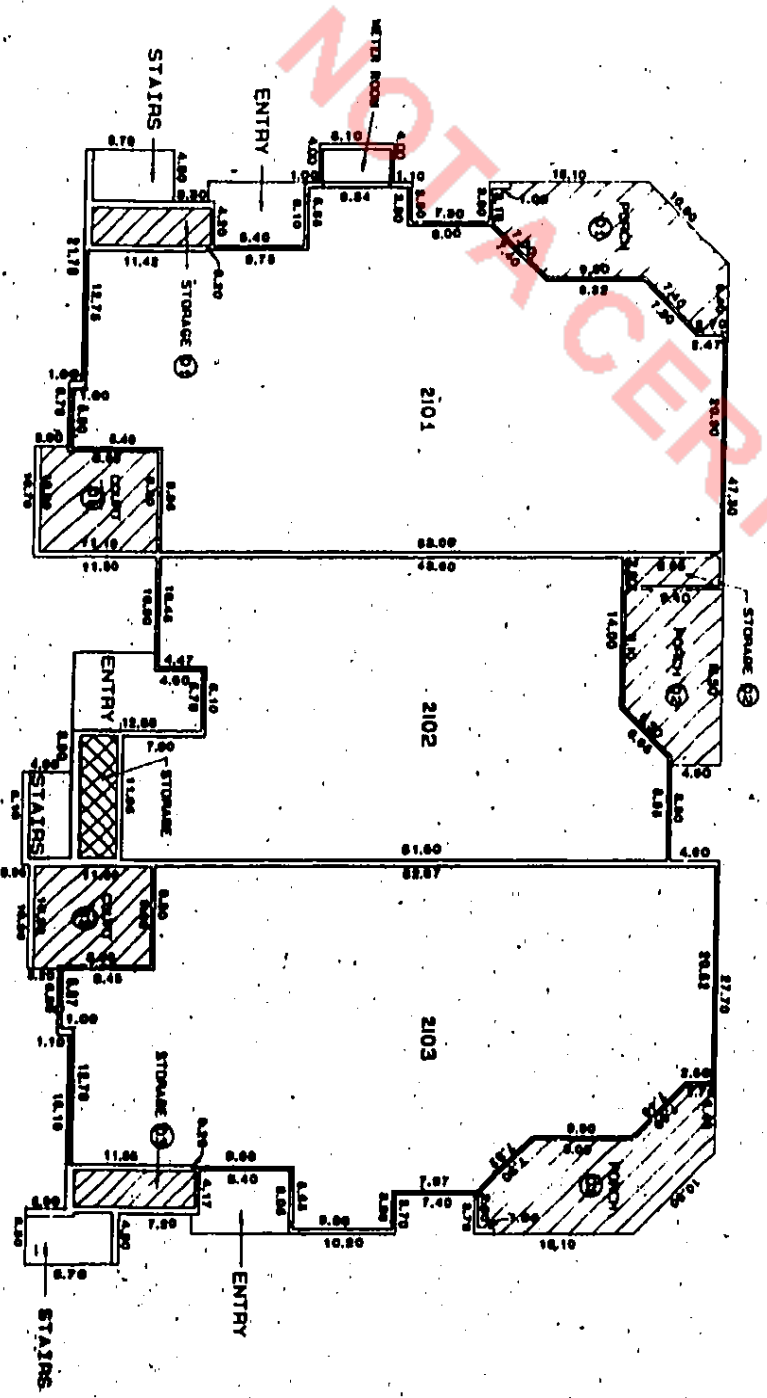
85251 P1115

EXHIBIT B
TO THE DECLARATION OF CONDOMINIUM OF
GLENEAGLES CONDOMINIUM III
SURVEY, PLOT PLAN AND GRAPHIC DESCRIPTION OF IMPROVEMENTS

FIRST FLOOR PLAN
BUILDING NO. 21

UNFINISHED FIRST FLOOR ELEVATION: 22.24
UNFINISHED FIRST FLOOR CEILING ELEVATION: 26.20

NOTE: NOTES TO SURVEY NOTES ATTACHED HERETO FOR FURTHER INFORMATION.



LEGEND

-  DENOTES UNIT BOUNDARY.
-  DENOTES LIMITED COMMON ELEMENT.
-  DENOTES UNIT NUMBER TO WHICH LIMITED COMMON ELEMENT IS APPURTENANT.
-  DENOTES COMMON ELEMENT.

NO.	REVISION	DATE	BY	DESCRIPTION OF REVISION
1	ISSUED			
2	REVISED			
3	REVISED			

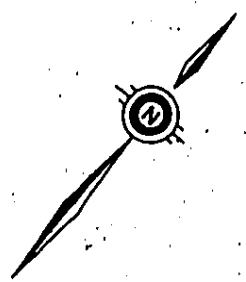
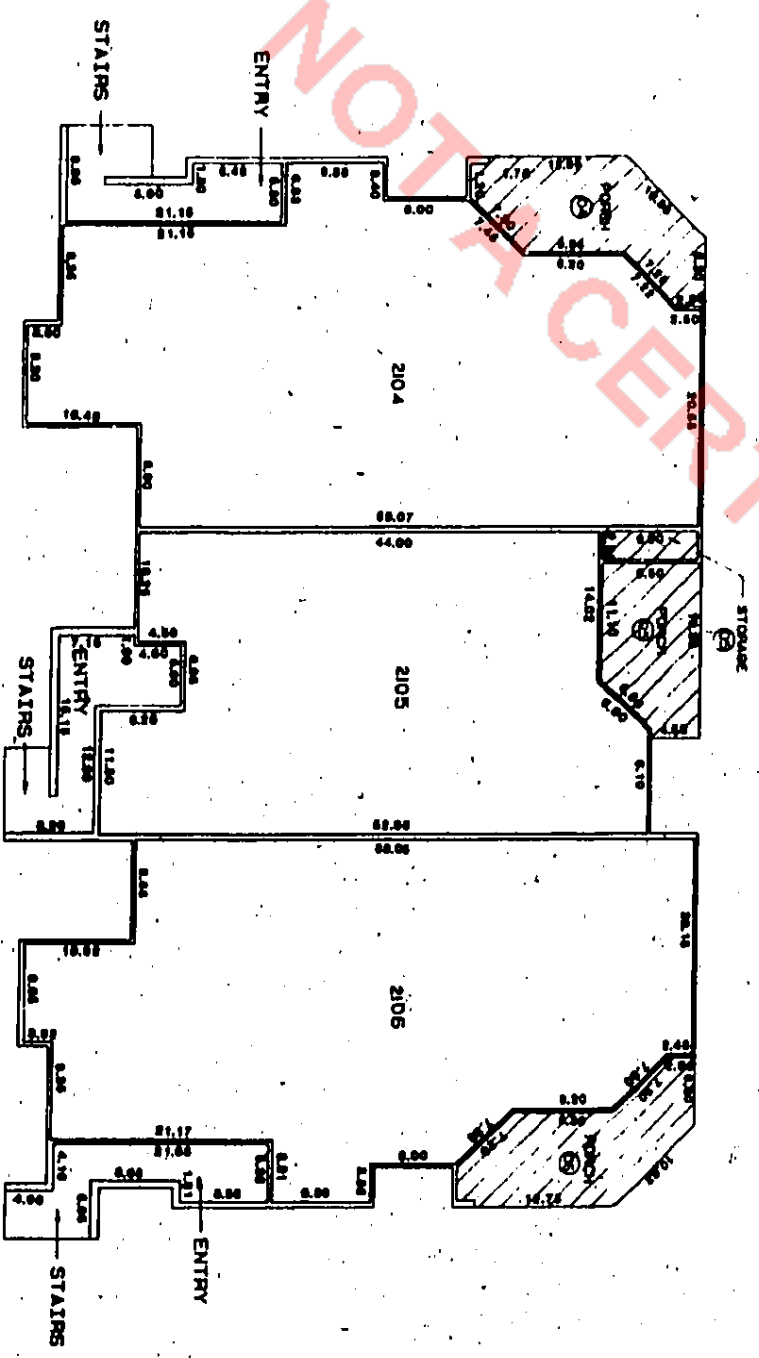
Meridian
Surveying and Mapping Inc.
2000 Lakeside Drive
New York, NY 10020
Tel: 212-692-1000
Fax: 212-692-1001
www.meridiansurveying.com

ACA

EXHIBIT B
 TO THE DECLARATION OF CONDOMINIUM OF
 GLENEAGLES CONDOMINIUM III
 SURVEY, PLOT PLAN AND GRAPHIC DESCRIPTION OF IMPROVEMENTS

SECOND FLOOR PLAN
 BUILDING NO. 21

UNFINISHED SECOND FLOOR ELEVATION: 84.66
 UNFINISHED SECOND FLOOR CEILING ELEVATION: 84.37
 NOTE: REFER TO SURVEY NOTES ATTACHED HERETO FOR FURTHER INFORMATION.



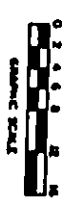
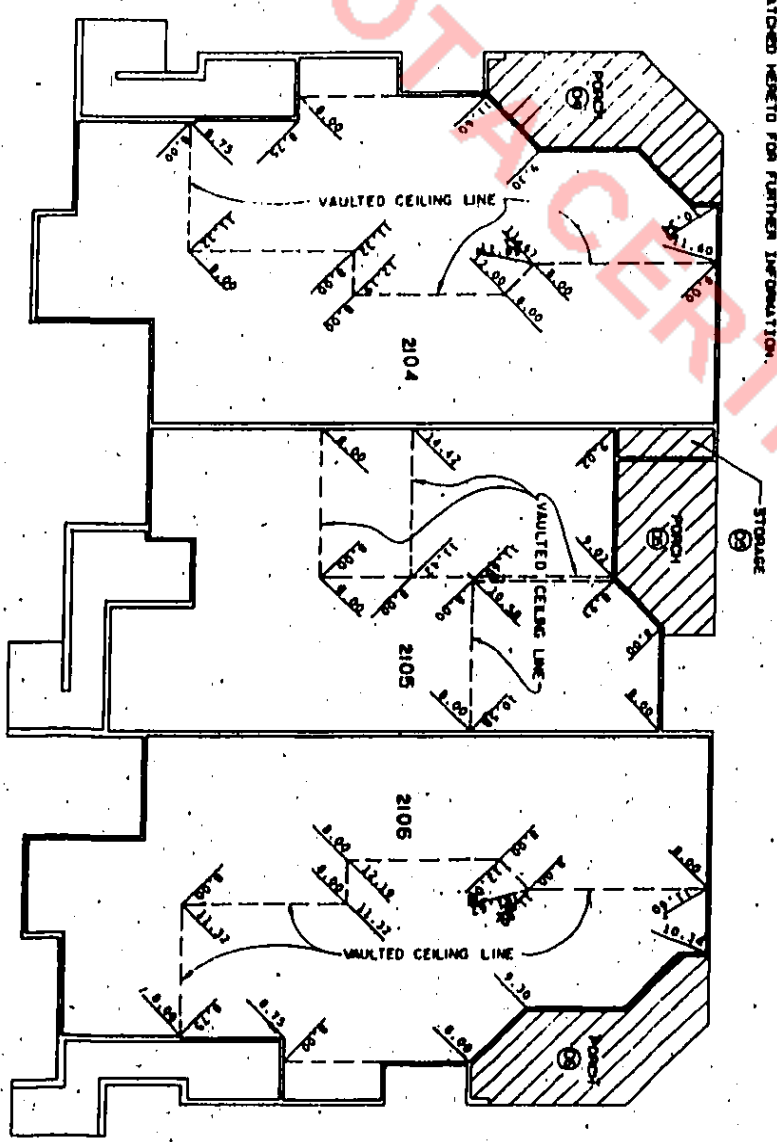
LEGEND
 [Symbol] DENOTES UNIT BOUNDARY.
 [Symbol] DENOTES LIMITED COMMON ELEMENT.
 [Symbol] DENOTES UNIT NUMBER TO WHICH LIMITED COMMON ELEMENT IS APPLICANT.

NO.	DESCRIPTION	DATE
1	PREPARED BY SURVEYOR	
2	REVISIONS	

EXHIBIT B
TO THE DECLARATION OF CONDOMINIUM OF
GLENEAGLES CONDOMINIUM III
SURVEY, PLOT PLAN AND GRAPHIC DESCRIPTION OF IMPROVEMENTS
TYPICAL CEILING ELEVATIONS
BUILDING NO. 21

NOTE: FOR ACTUAL ELEVATIONS OF UNFINISHED VAULTED CEILING LINES, ADD DIMENSIONS SHOWN HEREIN TO THE UNFINISHED SECOND FLOOR ELEVATION.

NOTE: REFER TO SURVEY NOTES ATTACHED HERETO FOR FURTHER INFORMATION.



LEGEND
--- DENOTES LIMITED COMMON ELEMENT.
- - - DENOTES ELEVATION DIFFERENCE FROM UNFINISHED SECOND FLOOR TO CEILING.
- - - DENOTES LIMITS OF VAULTED CEILING.

DATE	11/11/2011
PROJECT	GLENEAGLES CONDOMINIUM III
CLIENT	GLENEAGLES CONDOMINIUM III
DRAWN BY	...
CHECKED BY	...
SCALE	AS SHOWN

Meridian
Surveying and Mapping Inc.
1000 ...
...

EXHIBIT "B"
TO THE DECLARATION OF CONDOMINIUM OF
GLENEAGLES CONDOMINIUM III

CERTIFICATION

I, WESLEY B. HAAS, A LAND SURVEYOR DULY AUTHORIZED TO PRACTICE UNDER THE LAWS OF THE STATE OF FLORIDA, HEREBY CERTIFY THAT THE CONSTRUCTION OF THE IMPROVEMENTS CONSTITUTING BUILDING NO. 22 OF GLENEAGLES CONDOMINIUM III, A CONDOMINIUM, IS SUBSTANTIALLY COMPLETE SO THAT THE ATTACHED SURVEY, PLOT PLAN, AND GRAPHIC DESCRIPTION OF IMPROVEMENTS, TOGETHER WITH THE DECLARATION DESCRIBING THE CONDOMINIUM PROPERTY PRESENT AN ACCURATE REPRESENTATION OF THE LOCATION AND DIMENSIONS OF THE IMPROVEMENTS, AND THAT THE IDENTIFICATION, LOCATION, AND DIMENSIONS OF THE COMMON ELEMENTS AND OF EACH UNIT CAN BE DETERMINED FROM THESE MATERIALS AND COMMON ELEMENT FACILITIES SERVING BUILDING NO. 22 HAVE BEEN SUBSTANTIALLY COMPLETED, ALL IN ACCORDANCE WITH CHAPTER 718, SECTION 104, PARAGRAPH (4)e OF THE FLORIDA STATUTES.

GENERAL NOTATIONS:

1. ELEVATIONS SHOWN HEREON REFER TO N.O.S. DATUM AND ARE EXPRESSED IN FEET.
2. THE PROPOSED DIMENSIONS OF ALL BUILDINGS WERE COMPILED FROM PLANS AND DATA PREPARED BY SHEPHERD, LEGAN, ALDRIN, LTD.
3. THE PROPOSED FINISHED FLOOR ELEVATION OF THE FIRST FLOOR OF EACH BUILDING WAS PROVIDED BY WATMAN & ASSOCIATES, INC., CONSULTING ENGINEERS.
4. DIMENSIONS AND ELEVATIONS AS SHOWN HEREON ARE SUBJECT TO NORMAL CONSTRUCTION TOLERANCES.

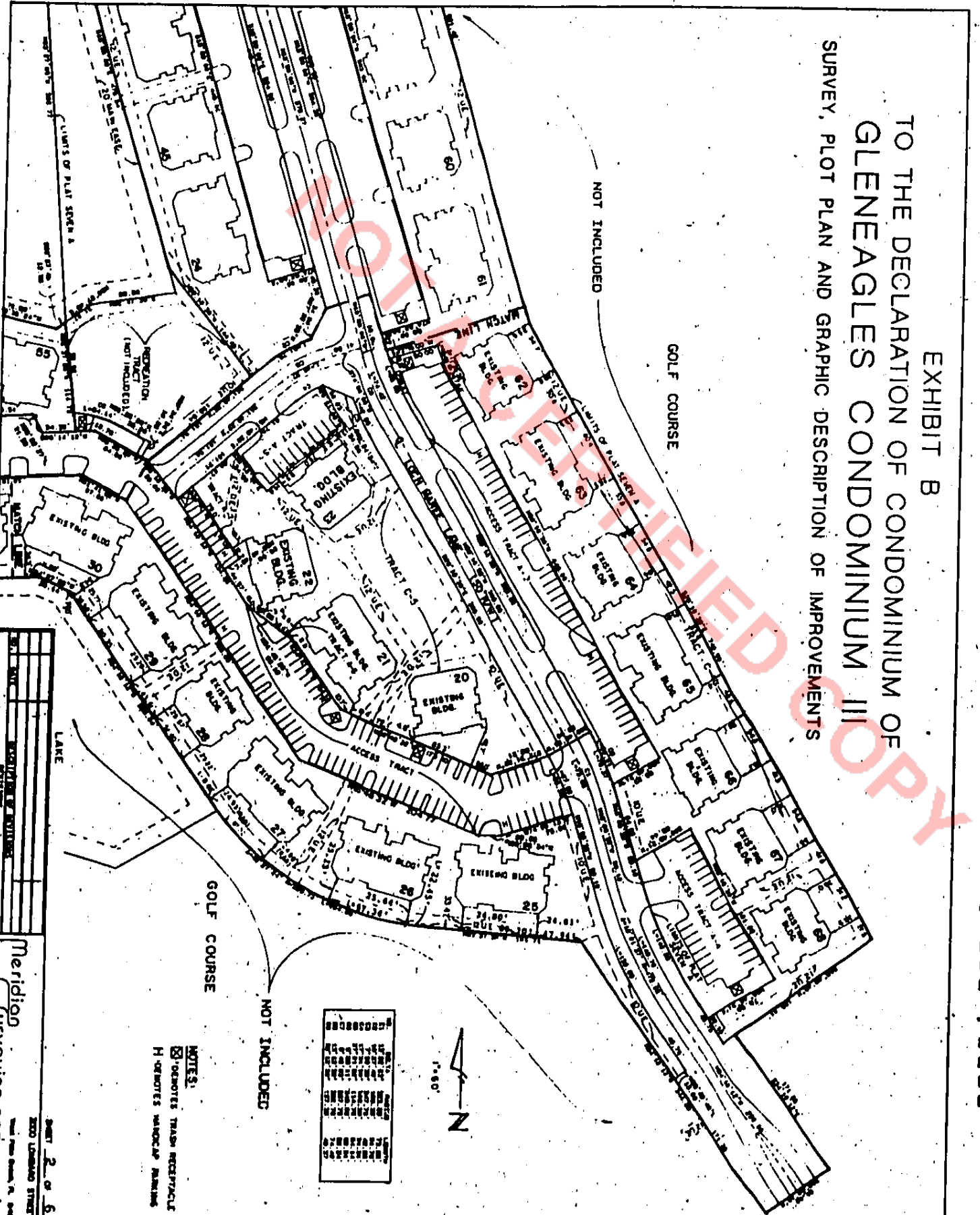


WESLEY B. HAAS
PROFESSIONAL LAND SURVEYOR
FLORIDA CERTIFICATE NO. 3708



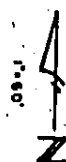
B5251 P1121

EXHIBIT B
TO THE DECLARATION OF CONDOMINIUM OF
GLENEAGLES CONDOMINIUM III
SURVEY, PLOT PLAN AND GRAPHIC DESCRIPTION OF IMPROVEMENTS



Meridion
Surveying and mapping inc
3000 LINDA ROAD
SUITE 200
DALLAS, TEXAS 75244
PHONE 972-342-1111
FAX 972-342-1112
WWW.MERIDIONMAPPING.COM

NOTES:
 [Symbol] DENOTES TRASH RECEPTACLE
 H DENOTES HANDICAP MARKING



[Symbol]	Asphalt
[Symbol]	Concrete
[Symbol]	Grass
[Symbol]	Gravel
[Symbol]	Impervious
[Symbol]	Permeable
[Symbol]	Water
[Symbol]	Wood
[Symbol]	Other

GOLF COURSE

GOLF COURSE

NOT INCLUDED

NOT INCLUDED

LAKE

LIMITS OF PLAT SEPARATE A

LIMITS OF PLAT SEPARATE A

LIMITS OF PLAT SEPARATE B

LIMITS OF PLAT SEPARATE C

LIMITS OF PLAT SEPARATE D

LIMITS OF PLAT SEPARATE E

LIMITS OF PLAT SEPARATE F

LIMITS OF PLAT SEPARATE G

LIMITS OF PLAT SEPARATE H

LIMITS OF PLAT SEPARATE I

LIMITS OF PLAT SEPARATE J

LIMITS OF PLAT SEPARATE K

LIMITS OF PLAT SEPARATE L

LIMITS OF PLAT SEPARATE M

LIMITS OF PLAT SEPARATE N

LIMITS OF PLAT SEPARATE O

LIMITS OF PLAT SEPARATE P

LIMITS OF PLAT SEPARATE Q

LIMITS OF PLAT SEPARATE R

LIMITS OF PLAT SEPARATE S

LIMITS OF PLAT SEPARATE T

LIMITS OF PLAT SEPARATE U

LIMITS OF PLAT SEPARATE V

LIMITS OF PLAT SEPARATE W

LIMITS OF PLAT SEPARATE X

LIMITS OF PLAT SEPARATE Y

LIMITS OF PLAT SEPARATE Z

LIMITS OF PLAT SEPARATE AA

LIMITS OF PLAT SEPARATE AB

LIMITS OF PLAT SEPARATE AC

LIMITS OF PLAT SEPARATE AD

LIMITS OF PLAT SEPARATE AE

LIMITS OF PLAT SEPARATE AF

LIMITS OF PLAT SEPARATE AG

LIMITS OF PLAT SEPARATE AH

LIMITS OF PLAT SEPARATE AI

LIMITS OF PLAT SEPARATE AJ

LIMITS OF PLAT SEPARATE AK

LIMITS OF PLAT SEPARATE AL

LIMITS OF PLAT SEPARATE AM

LIMITS OF PLAT SEPARATE AN

LIMITS OF PLAT SEPARATE AO

LIMITS OF PLAT SEPARATE AP

LIMITS OF PLAT SEPARATE AQ

LIMITS OF PLAT SEPARATE AR

LIMITS OF PLAT SEPARATE AS

LIMITS OF PLAT SEPARATE AT

LIMITS OF PLAT SEPARATE AU

LIMITS OF PLAT SEPARATE AV

LIMITS OF PLAT SEPARATE AW

LIMITS OF PLAT SEPARATE AX

LIMITS OF PLAT SEPARATE AY

LIMITS OF PLAT SEPARATE AZ

LIMITS OF PLAT SEPARATE BA

LIMITS OF PLAT SEPARATE BB

LIMITS OF PLAT SEPARATE BC

LIMITS OF PLAT SEPARATE BD

LIMITS OF PLAT SEPARATE BE

LIMITS OF PLAT SEPARATE BF

LIMITS OF PLAT SEPARATE BG

LIMITS OF PLAT SEPARATE BH

LIMITS OF PLAT SEPARATE BI

LIMITS OF PLAT SEPARATE BJ

LIMITS OF PLAT SEPARATE BK

LIMITS OF PLAT SEPARATE BL

LIMITS OF PLAT SEPARATE BM

LIMITS OF PLAT SEPARATE BN

LIMITS OF PLAT SEPARATE BO

LIMITS OF PLAT SEPARATE BP

LIMITS OF PLAT SEPARATE BQ

LIMITS OF PLAT SEPARATE BR

LIMITS OF PLAT SEPARATE BS

LIMITS OF PLAT SEPARATE BT

LIMITS OF PLAT SEPARATE BU

LIMITS OF PLAT SEPARATE BV

LIMITS OF PLAT SEPARATE BW

LIMITS OF PLAT SEPARATE BX

LIMITS OF PLAT SEPARATE BY

LIMITS OF PLAT SEPARATE BZ

LIMITS OF PLAT SEPARATE CA

LIMITS OF PLAT SEPARATE CB

LIMITS OF PLAT SEPARATE CC

LIMITS OF PLAT SEPARATE CD

LIMITS OF PLAT SEPARATE CE

LIMITS OF PLAT SEPARATE CF

LIMITS OF PLAT SEPARATE CG

LIMITS OF PLAT SEPARATE CH

LIMITS OF PLAT SEPARATE CI

LIMITS OF PLAT SEPARATE CJ

LIMITS OF PLAT SEPARATE CK

LIMITS OF PLAT SEPARATE CL

LIMITS OF PLAT SEPARATE CM

LIMITS OF PLAT SEPARATE CN

LIMITS OF PLAT SEPARATE CO

LIMITS OF PLAT SEPARATE CP

LIMITS OF PLAT SEPARATE CQ

LIMITS OF PLAT SEPARATE CR

LIMITS OF PLAT SEPARATE CS

LIMITS OF PLAT SEPARATE CT

LIMITS OF PLAT SEPARATE CU

LIMITS OF PLAT SEPARATE CV

LIMITS OF PLAT SEPARATE CW

LIMITS OF PLAT SEPARATE CX

LIMITS OF PLAT SEPARATE CY

LIMITS OF PLAT SEPARATE CZ

LIMITS OF PLAT SEPARATE DA

LIMITS OF PLAT SEPARATE DB

LIMITS OF PLAT SEPARATE DC

LIMITS OF PLAT SEPARATE DD

LIMITS OF PLAT SEPARATE DE

LIMITS OF PLAT SEPARATE DF

LIMITS OF PLAT SEPARATE DG

LIMITS OF PLAT SEPARATE DH

LIMITS OF PLAT SEPARATE DI

LIMITS OF PLAT SEPARATE DJ

LIMITS OF PLAT SEPARATE DK

LIMITS OF PLAT SEPARATE DL

LIMITS OF PLAT SEPARATE DM

LIMITS OF PLAT SEPARATE DN

LIMITS OF PLAT SEPARATE DO

LIMITS OF PLAT SEPARATE DP

LIMITS OF PLAT SEPARATE DQ

LIMITS OF PLAT SEPARATE DR

LIMITS OF PLAT SEPARATE DS

LIMITS OF PLAT SEPARATE DT

LIMITS OF PLAT SEPARATE DU

LIMITS OF PLAT SEPARATE DV

LIMITS OF PLAT SEPARATE DW

LIMITS OF PLAT SEPARATE DX

LIMITS OF PLAT SEPARATE DY

LIMITS OF PLAT SEPARATE DZ

LIMITS OF PLAT SEPARATE EA

LIMITS OF PLAT SEPARATE EB

LIMITS OF PLAT SEPARATE EC

LIMITS OF PLAT SEPARATE ED

LIMITS OF PLAT SEPARATE EE

LIMITS OF PLAT SEPARATE EF

LIMITS OF PLAT SEPARATE EG

LIMITS OF PLAT SEPARATE EH

LIMITS OF PLAT SEPARATE EI

LIMITS OF PLAT SEPARATE EJ

LIMITS OF PLAT SEPARATE EK

LIMITS OF PLAT SEPARATE EL

LIMITS OF PLAT SEPARATE EM

LIMITS OF PLAT SEPARATE EN

LIMITS OF PLAT SEPARATE EO

LIMITS OF PLAT SEPARATE EP

LIMITS OF PLAT SEPARATE EQ

LIMITS OF PLAT SEPARATE ER

LIMITS OF PLAT SEPARATE ES

LIMITS OF PLAT SEPARATE ET

LIMITS OF PLAT SEPARATE EU

LIMITS OF PLAT SEPARATE EV

LIMITS OF PLAT SEPARATE EW

LIMITS OF PLAT SEPARATE EX

LIMITS OF PLAT SEPARATE EY

LIMITS OF PLAT SEPARATE EZ

LIMITS OF PLAT SEPARATE FA

LIMITS OF PLAT SEPARATE FB

LIMITS OF PLAT SEPARATE FC

LIMITS OF PLAT SEPARATE FD

LIMITS OF PLAT SEPARATE FE

LIMITS OF PLAT SEPARATE FF

LIMITS OF PLAT SEPARATE FG

LIMITS OF PLAT SEPARATE FH

LIMITS OF PLAT SEPARATE FI

LIMITS OF PLAT SEPARATE FJ

LIMITS OF PLAT SEPARATE FK

LIMITS OF PLAT SEPARATE FL

LIMITS OF PLAT SEPARATE FM

LIMITS OF PLAT SEPARATE FN

LIMITS OF PLAT SEPARATE FO

LIMITS OF PLAT SEPARATE FP

LIMITS OF PLAT SEPARATE FQ

LIMITS OF PLAT SEPARATE FR

LIMITS OF PLAT SEPARATE FS

LIMITS OF PLAT SEPARATE FT

LIMITS OF PLAT SEPARATE FU

LIMITS OF PLAT SEPARATE FV

LIMITS OF PLAT SEPARATE FW

LIMITS OF PLAT SEPARATE FX

LIMITS OF PLAT SEPARATE FY

LIMITS OF PLAT SEPARATE FZ

LIMITS OF PLAT SEPARATE GA

LIMITS OF PLAT SEPARATE GB

LIMITS OF PLAT SEPARATE GC

LIMITS OF PLAT SEPARATE GD

LIMITS OF PLAT SEPARATE GE

LIMITS OF PLAT SEPARATE GF

LIMITS OF PLAT SEPARATE GG

LIMITS OF PLAT SEPARATE GH

LIMITS OF PLAT SEPARATE GI

LIMITS OF PLAT SEPARATE GJ

LIMITS OF PLAT SEPARATE GK

LIMITS OF PLAT SEPARATE GL

LIMITS OF PLAT SEPARATE GM

LIMITS OF PLAT SEPARATE GN

LIMITS OF PLAT SEPARATE GO

LIMITS OF PLAT SEPARATE GP

LIMITS OF PLAT SEPARATE GQ

LIMITS OF PLAT SEPARATE GR

LIMITS OF PLAT SEPARATE GS

LIMITS OF PLAT SEPARATE GT

LIMITS OF PLAT SEPARATE GU

LIMITS OF PLAT SEPARATE GV

LIMITS OF PLAT SEPARATE GW

LIMITS OF PLAT SEPARATE GX

LIMITS OF PLAT SEPARATE GY

LIMITS OF PLAT SEPARATE GZ

LIMITS OF PLAT SEPARATE HA

LIMITS OF PLAT SEPARATE HB

LIMITS OF PLAT SEPARATE HC

LIMITS OF PLAT SEPARATE HD

LIMITS OF PLAT SEPARATE HE

LIMITS OF PLAT SEPARATE HF

LIMITS OF PLAT SEPARATE HG

LIMITS OF PLAT SEPARATE HH

LIMITS OF PLAT SEPARATE HI

LIMITS OF PLAT SEPARATE HJ

LIMITS OF PLAT SEPARATE HK

LIMITS OF PLAT SEPARATE HL

LIMITS OF PLAT SEPARATE HM

LIMITS OF PLAT SEPARATE HN

LIMITS OF PLAT SEPARATE HO

LIMITS OF PLAT SEPARATE HP

LIMITS OF PLAT SEPARATE HQ

LIMITS OF PLAT SEPARATE HR

LIMITS OF PLAT SEPARATE HS

LIMITS OF PLAT SEPARATE HT

LIMITS OF PLAT SEPARATE HU

LIMITS OF PLAT SEPARATE HV

LIMITS OF PLAT SEPARATE HW

LIMITS OF PLAT SEPARATE HX

LIMITS OF PLAT SEPARATE HY

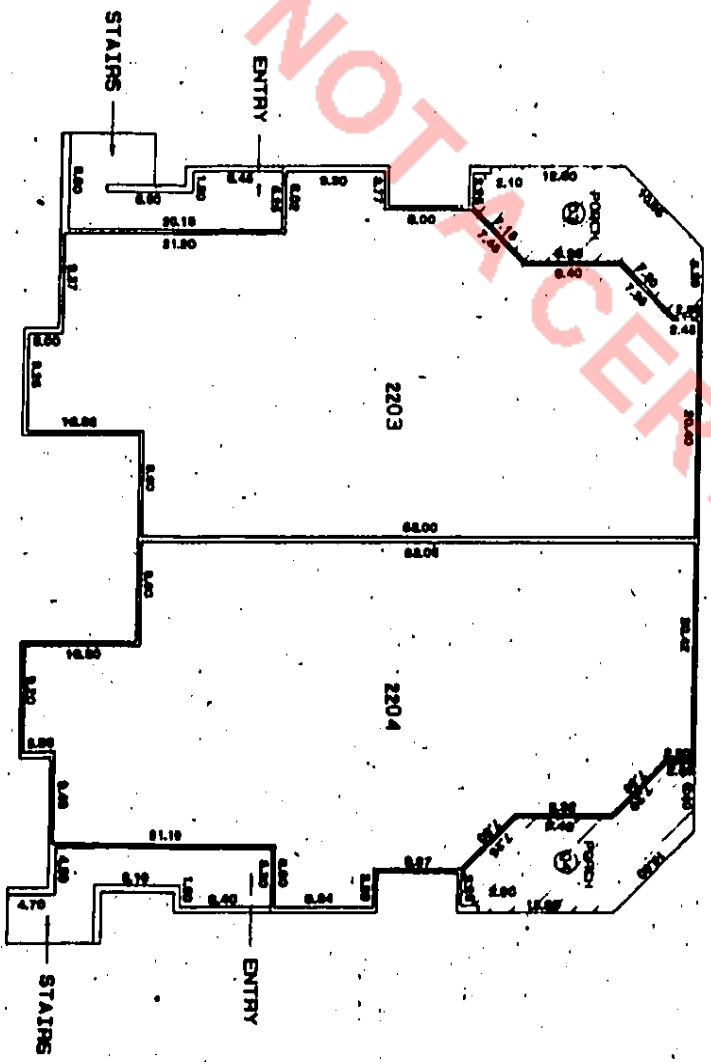
EXHIBIT B
TO THE DECLARATION OF CONDOMINIUM OF
GLENEAGLES CONDOMINIUM III

SURVEY, PLOT PLAN AND GRAPHIC DESCRIPTION OF IMPROVEMENTS

SECOND FLOOR PLAN
BUILDING NO. 22

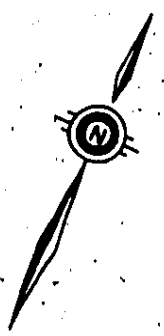
UNFINISHED SECOND FLOOR ELEVATION: 8.00
UNFINISHED SECOND FLOOR CEILING ELEVATION: 8.00

NOTE: REFER TO SURVEY NOTES ATTACHED HERETO FOR FURTHER INFORMATION.



LEGEND

- DENOTES UNIT BOUNDARY.
- DENOTES LIMITED COMMON ELEMENT.
- DENOTES UNIT NUMBER TO WHICH LIMITED COMMON ELEMENT IS APPLICANT.



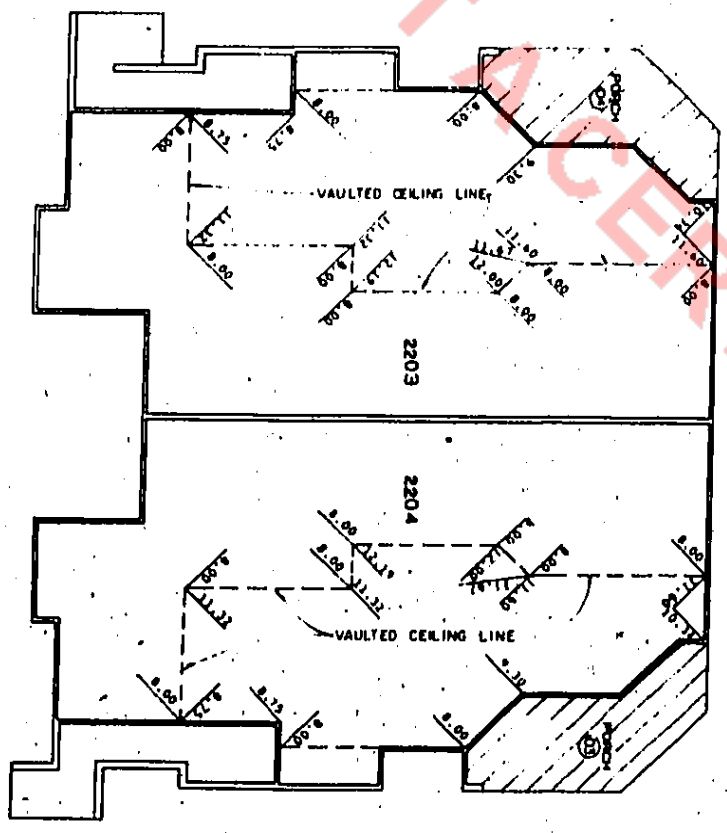
NO.	DATE	DESCRIPTION OF REVISIONS
1	01/11/00	ISSUED FOR PERMITS
2	01/11/00	ISSUED FOR PERMITS

Meridian
Surveying and Mapping Inc.
5000 Lakeside Blvd.
Houston, Texas, TX 77056-3800
Tel: 281-414-4400
Fax: 281-414-4401
www.meridiansurveying.com

EXHIBIT B
TO THE DECLARATION OF CONDOMINIUM OF
GLENEAGLES CONDOMINIUM III
SURVEY, PLOT PLAN AND GRAPHIC DESCRIPTION OF IMPROVEMENTS
TYPICAL CEILING ELEVATIONS

BUILDING NO. 22

NOTE: FOR ACTUAL ELEVATIONS OF UNFINISHED VAULTED CEILING LINES, ADD DIMENSIONS SHOWN HEREIN TO THE UNFINISHED SECOND FLOOR ELEVATION.
NOTE: REFER TO SURVEY NOTES ATTACHED HERETO FOR FURTHER INFORMATION.



LEGEND
--- DENOTES LIMITED COMMON ELEMENT.
--- DENOTES ELEVATION DIFFERENCE FROM UNFINISHED SECOND FLOOR TO CEILING.
--- DENOTES LIMITS OF VAULTED CEILING.

NO.	DESCRIPTION	DATE
1	REVISION	
2	REVISION	
3	REVISION	
4	REVISION	
5	REVISION	

Meridian
Surveying and Mapping Inc.
10000 Meridian Blvd.
Meridian, MS 39307
Phone: 662-489-1111
Fax: 662-489-1112
www.meridianms.com

EXHIBIT "B"
TO THE DECLARATION OF CONDOMINIUM OF
GLENEAGLES CONDOMINIUM III

CERTIFICATION

I, WESLEY B. HAAS, A LAND SURVEYOR DULY AUTHORIZED TO PRACTICE UNDER THE LAWS OF THE STATE OF FLORIDA, HEREBY CERTIFY THAT THE CONSTRUCTION OF THE IMPROVEMENTS CONSTITUTING BUILDING NO. 23 OF GLENEAGLES CONDOMINIUM III, A CONDOMINIUM, IS SUBSTANTIALLY COMPLETE SO THAT THE ATTACHED SURVEY, PLOT PLAN, AND GRAPHIC DESCRIPTION OF IMPROVEMENTS, TOGETHER WITH THE DECLARATION DESCRIBING THE CONDOMINIUM PROPERTY PRESENT AN ACCURATE REPRESENTATION OF THE LOCATION AND DIMENSIONS OF THE IMPROVEMENTS, AND THAT THE IDENTIFICATION, LOCATION, AND DIMENSIONS OF THE COMMON ELEMENTS AND OF EACH UNIT CAN BE DETERMINED FROM THESE MATERIALS AND COMMON ELEMENT FACILITIES SERVING BUILDING NO. 23 HAVE BEEN SUBSTANTIALLY COMPLETED, ALL IN ACCORDANCE WITH CHAPTER 718, SECTION 104, PARAGRAPH (4)e OF THE FLORIDA STATUTES.

GENERAL NOTATIONS:

1. ELEVATIONS SHOWN HEREON REFER TO N.O.S. DATUM AND ARE EXPRESSED IN FEET.
2. THE PROPOSED DIMENSIONS OF ALL BUILDINGS WERE COMPILED FROM PLANS AND DATA PREPARED BY SHEPHERD, LEGAN, ALDRIAN, I/TO.
3. THE PROPOSED FINISHED FLOOR ELEVATION OF THE FIRST FLOOR OF EACH BUILDING WAS PROVIDED BY WANTMAN & ASSOCIATES, INC., CONSULTING ENGINEERS.
4. DIMENSIONS AND ELEVATIONS AS SHOWN HEREON ARE SUBJECT TO NORMAL CONSTRUCTION TOLERANCES.



WESLEY B. HAAS
PROFESSIONAL LAND SURVEYOR
FLORIDA CERTIFICATE NO. 3708



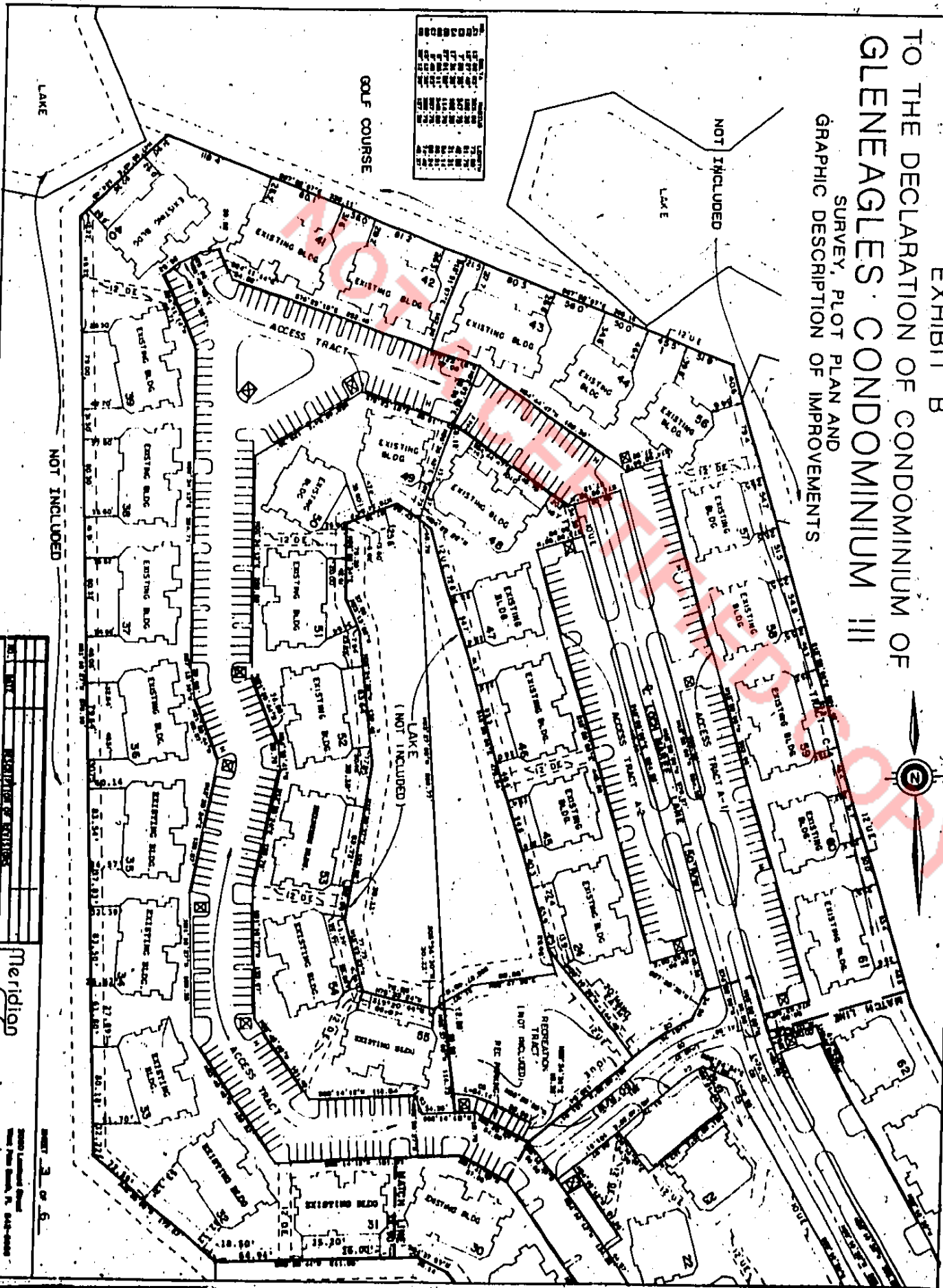
85251 P1127

RECORDER'S MEMO: Legibility of Writing, Typing or Printing unsatisfactory in this document when received.

EXHIBIT B
TO THE DECLARATION OF CONDOMINIUM OF
GLENEAGLES CONDOMINIUM III

SURVEY, PLOT PLAN AND GRAPHIC DESCRIPTION OF IMPROVEMENTS

85251 P1129



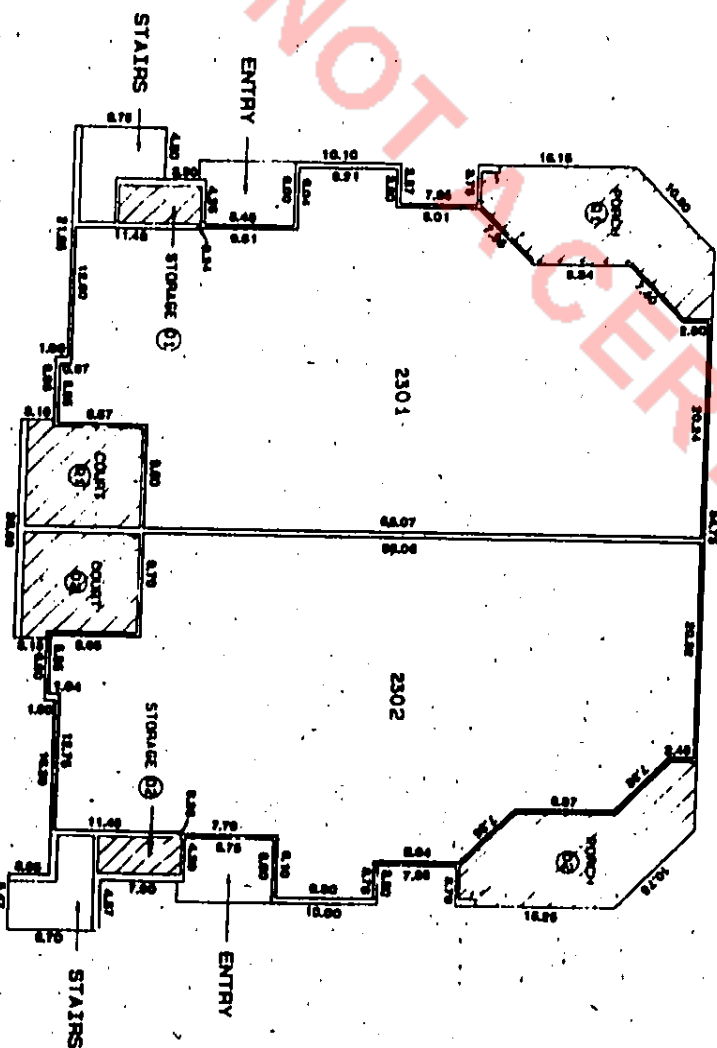
Meridian
 Surveying and Mapping Inc.
 MAY 3 2016

EXHIBIT B
TO THE DECLARATION OF CONDOMINIUM OF
GLENEAGLES CONDOMINIUM III
SURVEY, PLOT PLAN AND GRAPHIC DESCRIPTION OF IMPROVEMENTS

FIRST FLOOR PLAN
BUILDING NO. 23

UNFINISHED FIRST FLOOR ELEVATOR RUM
UNFINISHED FIRST FLOOR CEILING ELEVATOR SHAFT

NOTE: REFER TO SURVEY NOTES ATTACHED HERETO FOR FURTHER INFORMATION.

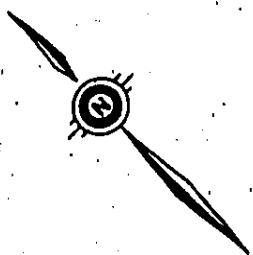


LEGEND

--- DENOTES UNIT BOUNDARY.

--- DENOTES LIMITED COMMON ELEMENT.

--- DENOTES UNIT NUMBER TO WHICH LIMITED COMMON ELEMENT IS APPLICABLE.



NO.	DATE	DESCRIPTION OF REVISIONS

Meridian
Surveying and Mapping Inc.

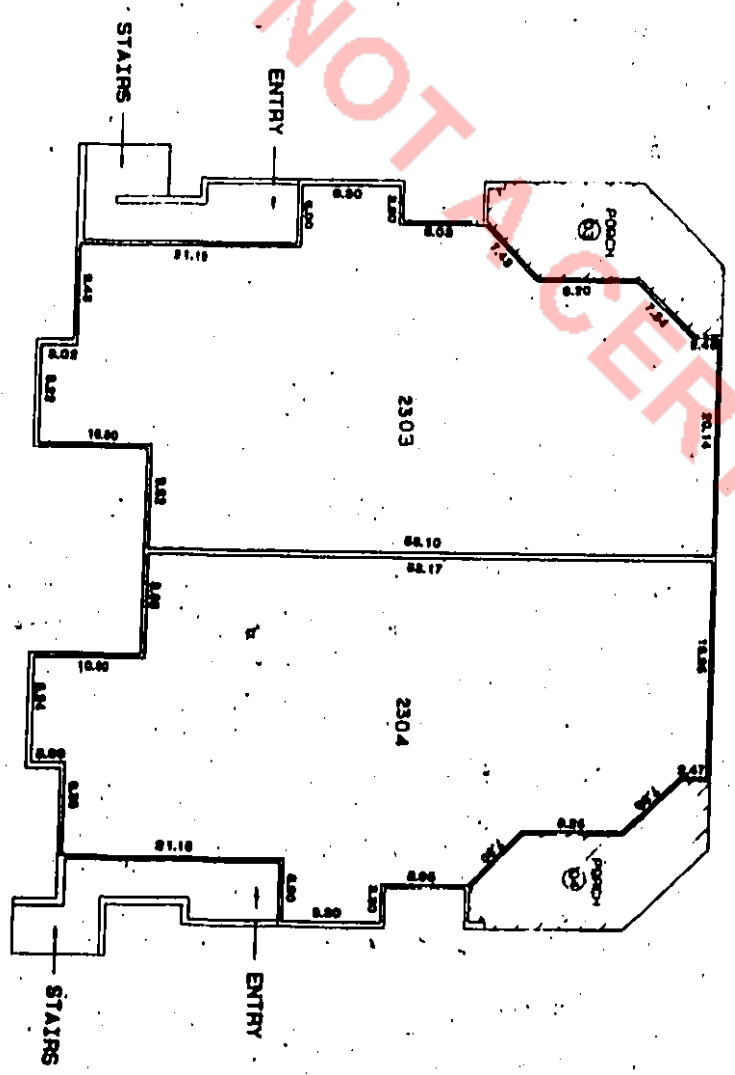
EXHIBIT B
TO THE DECLARATION OF CONDOMINIUM OF
GLENEAGLES CONDOMINIUM III

SURVEY, PLOT PLAN AND GRAPHIC DESCRIPTION OF IMPROVEMENTS




UNFINISHED SECOND FLOOR ELEVATION: 81.10
UNFINISHED SECOND FLOOR CEILING ELEVATION: 84.17

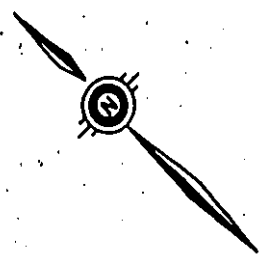
SECOND FLOOR PLAN
BUILDING NO. 23

NOTE: REFER TO SURVEY NOTES ATTACHED HERETO FOR FURTHER INFORMATION.



LEGEND

-  DENOTES UNIT BOUNDARY.
-  DENOTES LIMITED COMMON ELEMENT.
-  DENOTES UNIT NUMBER TO WHICH LIMITED COMMON ELEMENT IS APPURTENANT.



NO.	DATE	DESCRIPTION OF REVISION
1	1/15/03	ISSUED FOR PERMIT
2	1/15/03	REVISION

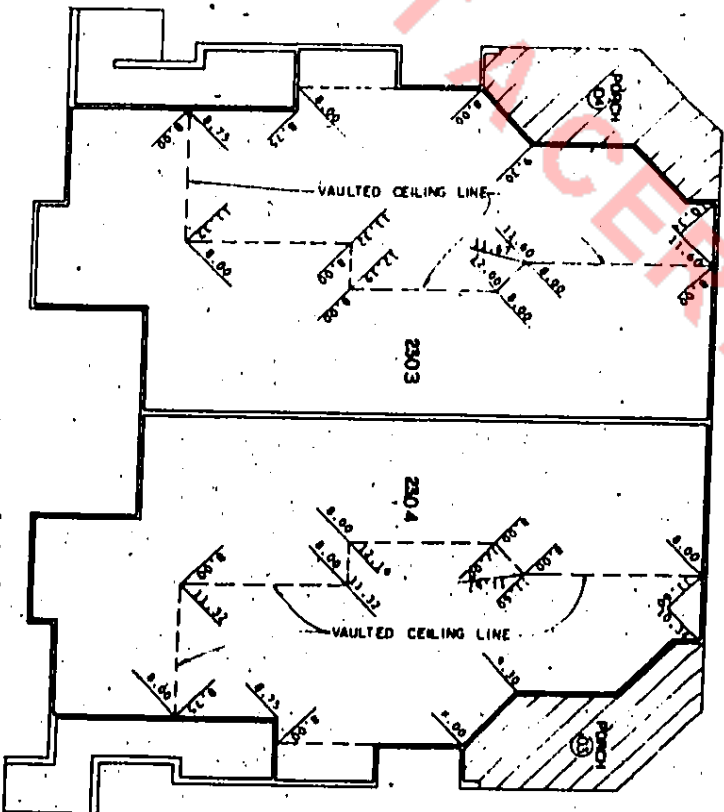
Meridian
Surveying and mapping inc.
1000 Lakeside Drive
West Palm Beach, FL 33411-4000
Phone: 561-833-9000
Fax: 561-833-9001
www.meridiansurveying.com

EXHIBIT B
TO THE DECLARATION OF CONDOMINIUM OF
GLENEAGLES CONDOMINIUM, III
SURVEY, PLOT PLAN AND GRAPHIC DESCRIPTION OF IMPROVEMENTS
TYPICAL CEILING ELEVATIONS

BUILDING NO. 23

NOTE: FOR ACTUAL ELEVATIONS OF UNFINISHED VAULTED CEILING LINES, ADD DIMENSIONS SHOWN HEREIN TO THE UNFINISHED SECOND FLOOR ELEVATION.

NOTE: REFER TO SURVEY NOTES ATTACHED HERETO FOR FURTHER INFORMATION.

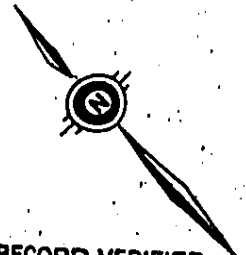


LEGEND

DENOTES LIMITED COMMON ELEMENT.

DENOTES ELEVATION DIFFERENCE FROM UNFINISHED SECOND FLOOR TO CEILING.

DENOTES LIMITS OF VAULTED CEILINGS.



RECORD VERIFIED
PALM BEACH COUNTY FLA.
JOHN B. DUNKLE
CLERK CIRCUIT COURT

1	UNITS	2	COMMON ELEMENTS
1	UNIT	1	COMMON ELEMENTS
1	UNIT	1	COMMON ELEMENTS
1	UNIT	1	COMMON ELEMENTS

Meridian
Surveying and Mapping Inc.

2000 Lakeside Drive
West Palm Beach, FL 33411
Tel: 561-833-8888
Fax: 561-833-8889
www.meridiansurveying.com